

# Grid Portals: Putting the User Interface on the Grid and Virtual Organizations

Charles Severance

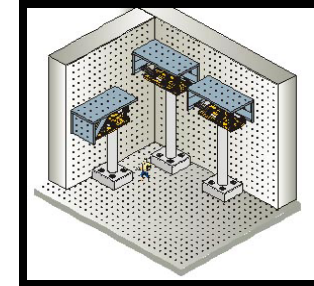
University of Michigan

NEESGrid project, OGCE Project, Sakai Project

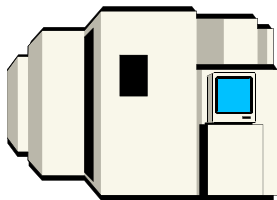
[www.dr-chuck.com](http://www.dr-chuck.com)

[csev@umich.edu](mailto:csev@umich.edu)

Grid: A collection of “things” (people, equipment, etc) which need to work together to accomplish some task

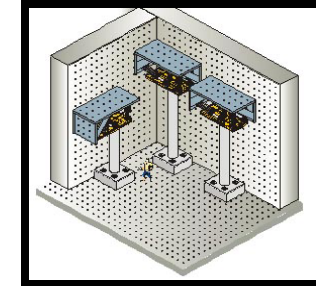


NEESGrid: \$200M, 13 years, 30+ organizations, 300+ people, a NEES non-profit consortium, 16 geographically distributed experimental sites all combine using the global public Internet to produce one national experimental laboratory which will enable fundamental advances in earthquake engineering.

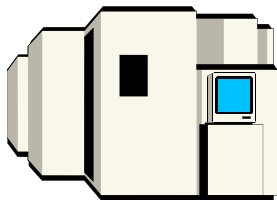


Note: In this story (like all good stories) everything sounds very good *but* there is a flaw - look for it... See if you can figure out what the flaw is before it is revealed at the end of the story...

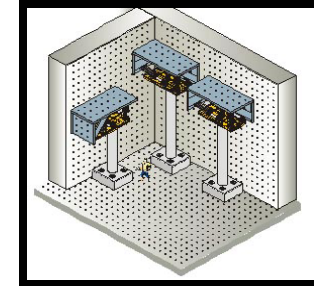
# Making a Grid: Step 1 - Invent a Grid Toolkit with protocols



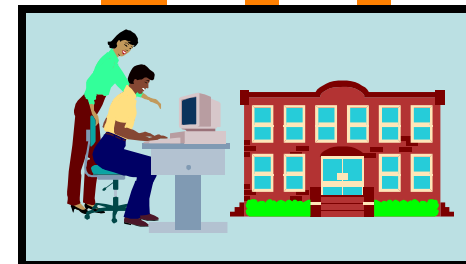
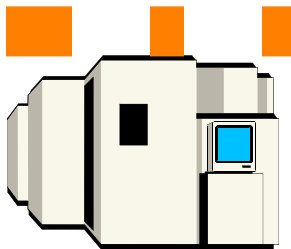
## The Globus Toolkit



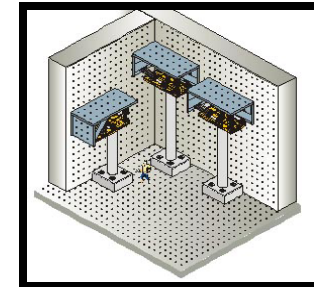
Making a Grid: Step 2 - Add those protocols to the “things” that need to work together...



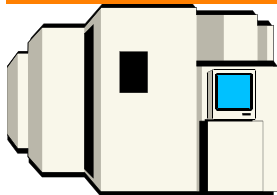
# The Globus Toolkit



# Making a Grid: Step 3 - Plug it all in...

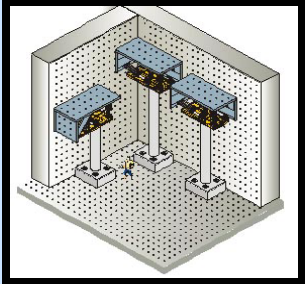


## The Globus Toolkit

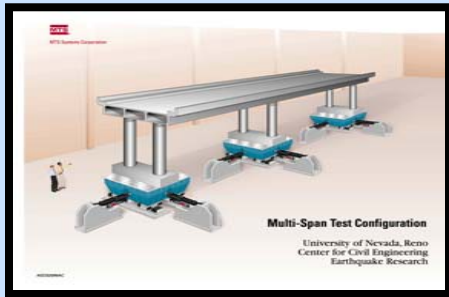
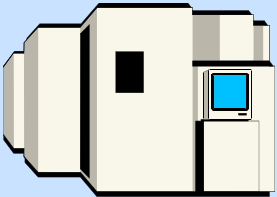


Note: By now you have seen the flaw several times - you should be forming a hypothesis about the flaw right about now....

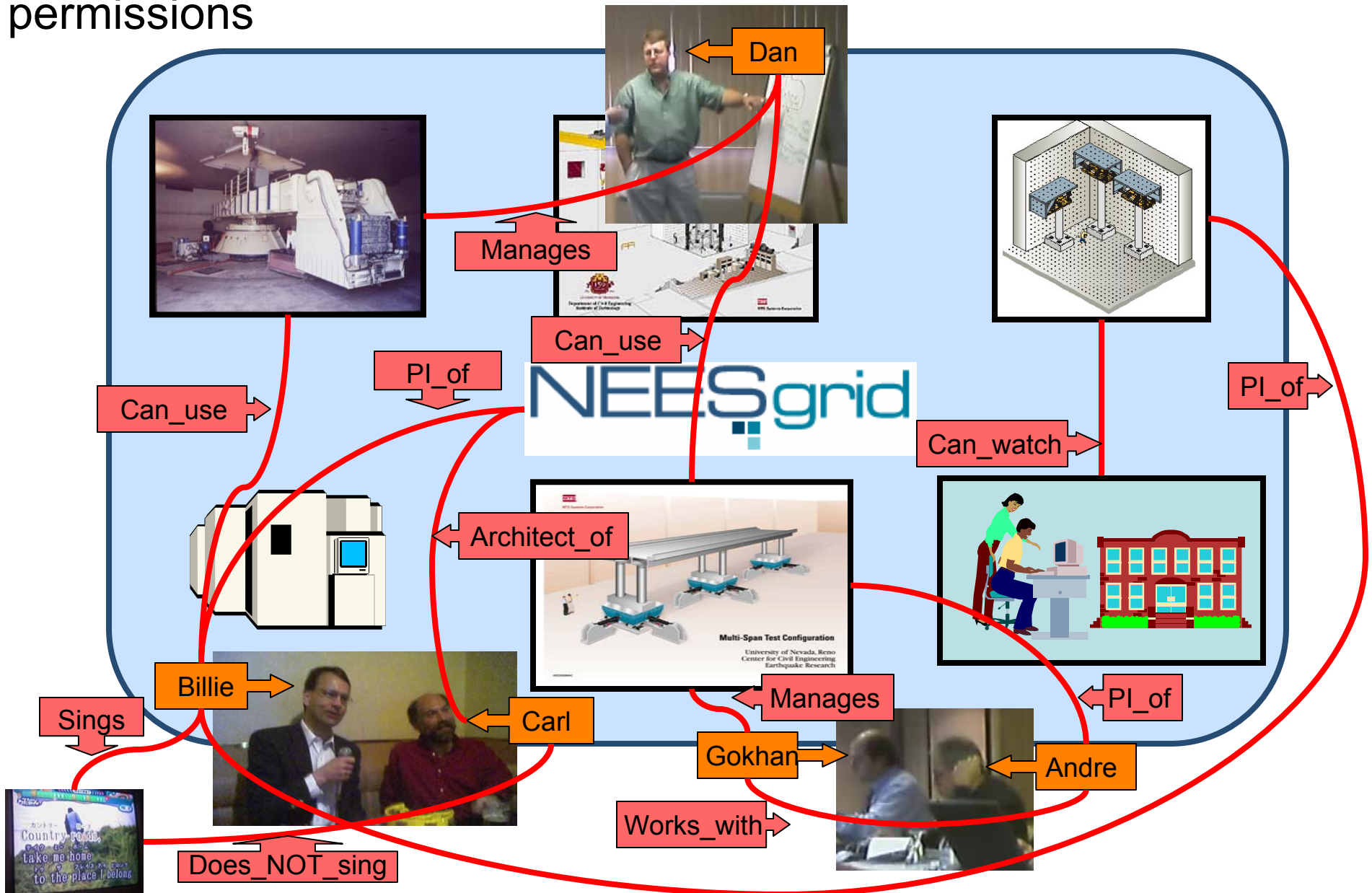
# Making a Grid: Step 3 - Viola! NEESGrid is connected together.



NEESgrid

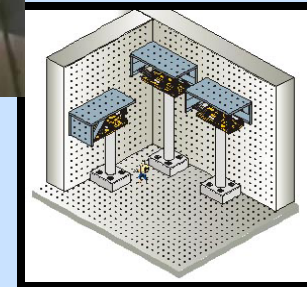


Making a Grid: Just connecting gadgets to a fabric is not sufficient for a Grid - there are “virtual organizations” with rights and permissions

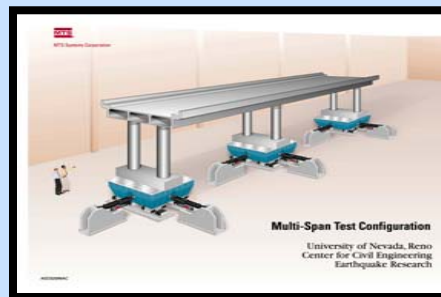
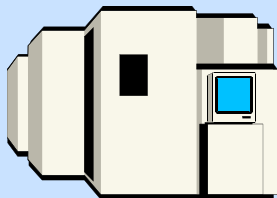




# Grid Technology + Virtual Organization = a Real-Live Grid

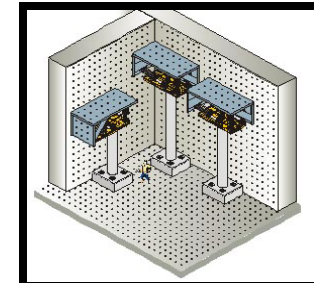


NEESgrid

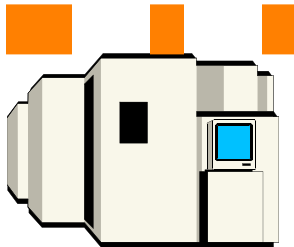




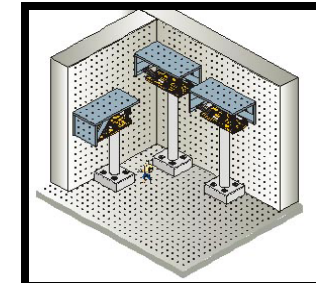
Making a Grid: Back to the flaw (aka challenge) - it is in this picture somewhere....



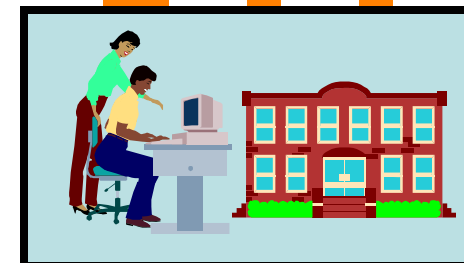
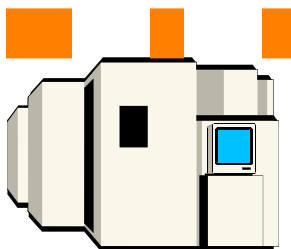
# The Globus Toolkit



Making a Grid: Hint - Which of these six elements is the most difficult to connect to the Grid....



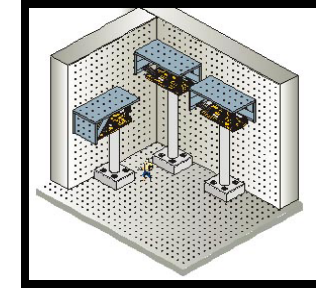
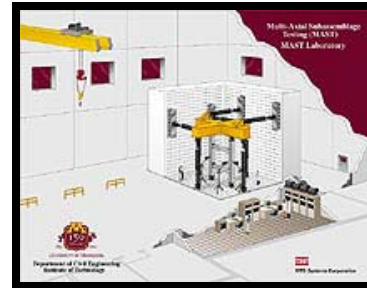
# The Globus Toolkit



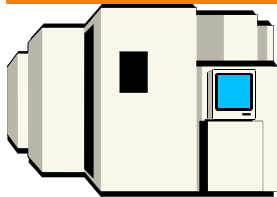
Making a Grid: The hard part is that people won't stand still long enough to install the Globus toolkit on them...



Making a Grid: People are more complex than computers.



## The Globus Toolkit

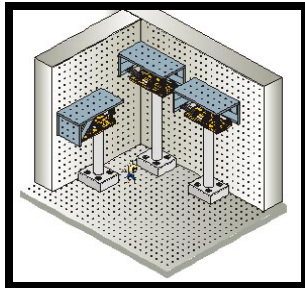


What to do ??

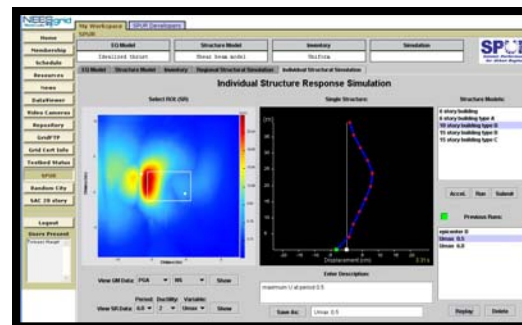
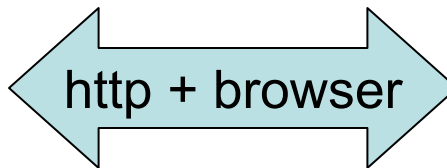
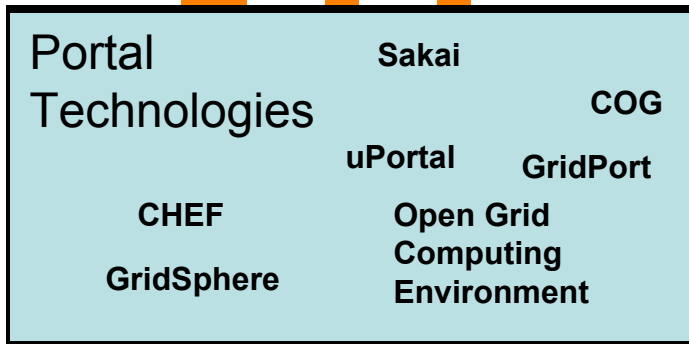
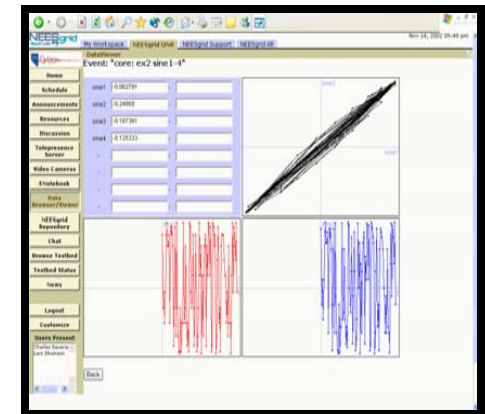
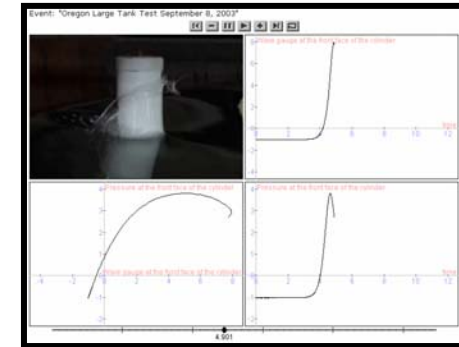
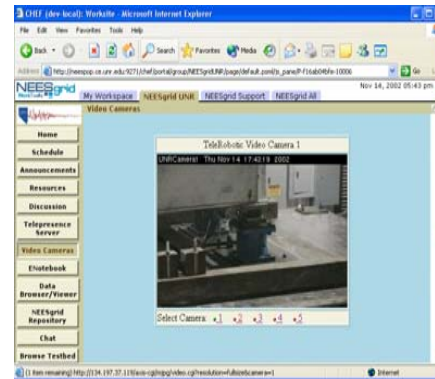




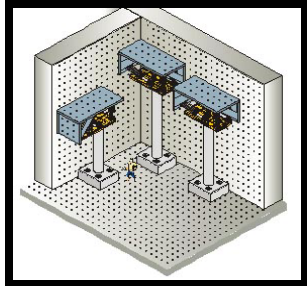
# Making a Grid: Grid Portals bridge the gap creating a familiar browser-based user interface to their Grid



The Grid



# Making a Grid: Grid moving towards the desktop

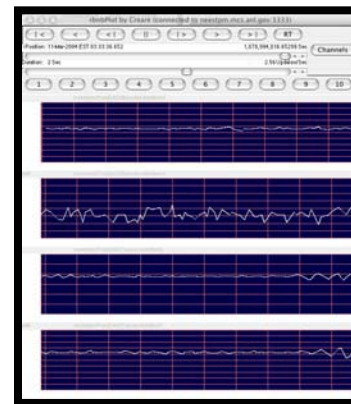
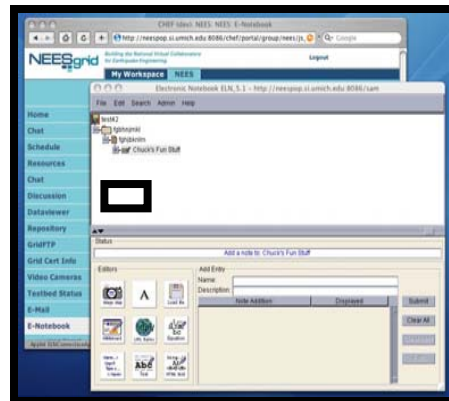


The Grid



While Grid Portals allow everyone to use Grid resources, and provide an excellent way to collect and trivially distribute functionality, with the emergence of a well supported desktop Java and Java-based GT3 and GT4, it is more and more practical to make a standard Mac, PC, or UNIX desktop a true peer within the Grid with full credentials and desktop applications with higher-functionality interfaces and higher performance.

Grid portals still have a role in this work for those who can't or won't alter their personal system or move from computer to computer. We can also develop common APIs between portals and desktop tools so as to maximize reuse of non-display aspects of software.

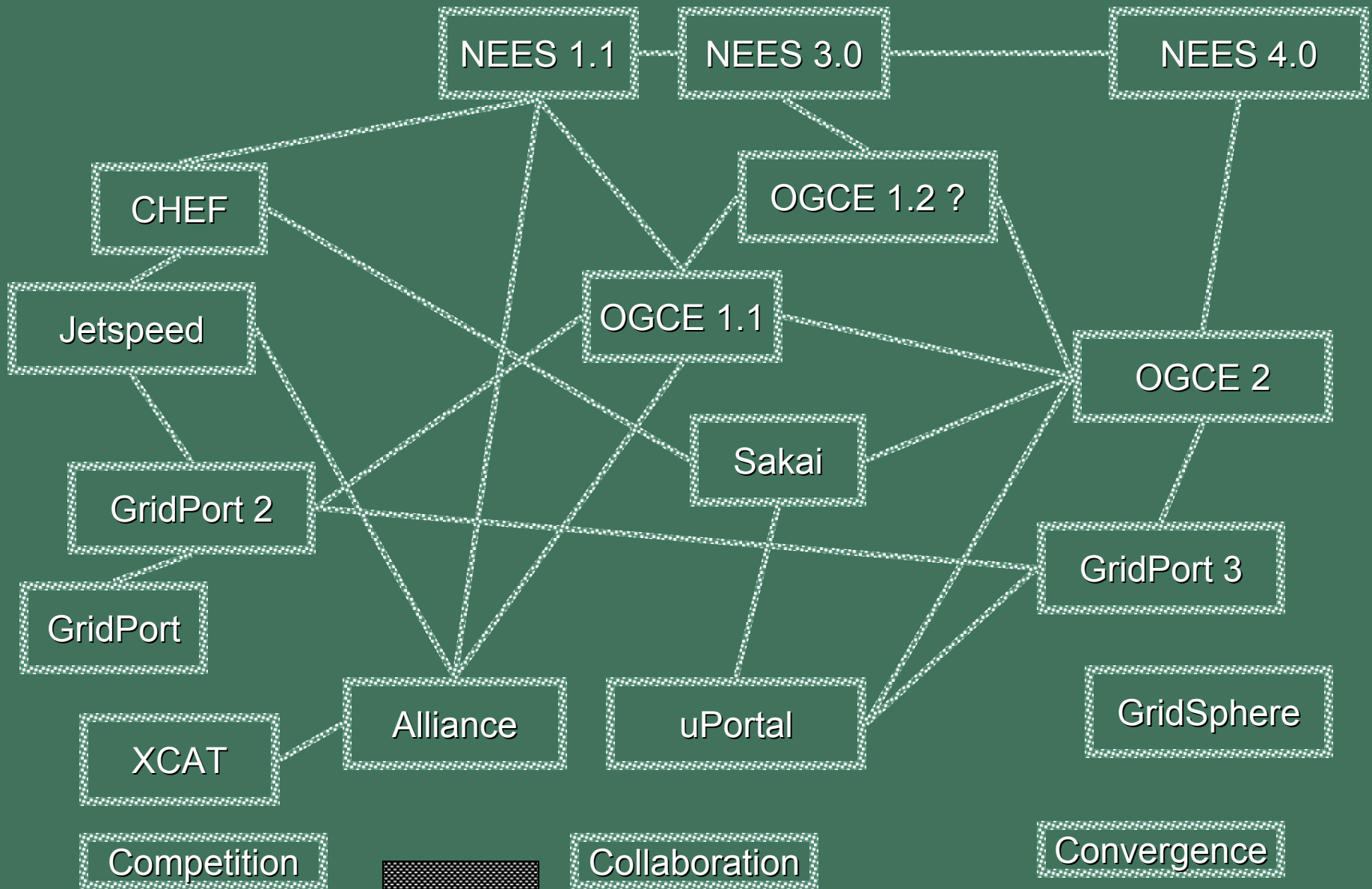




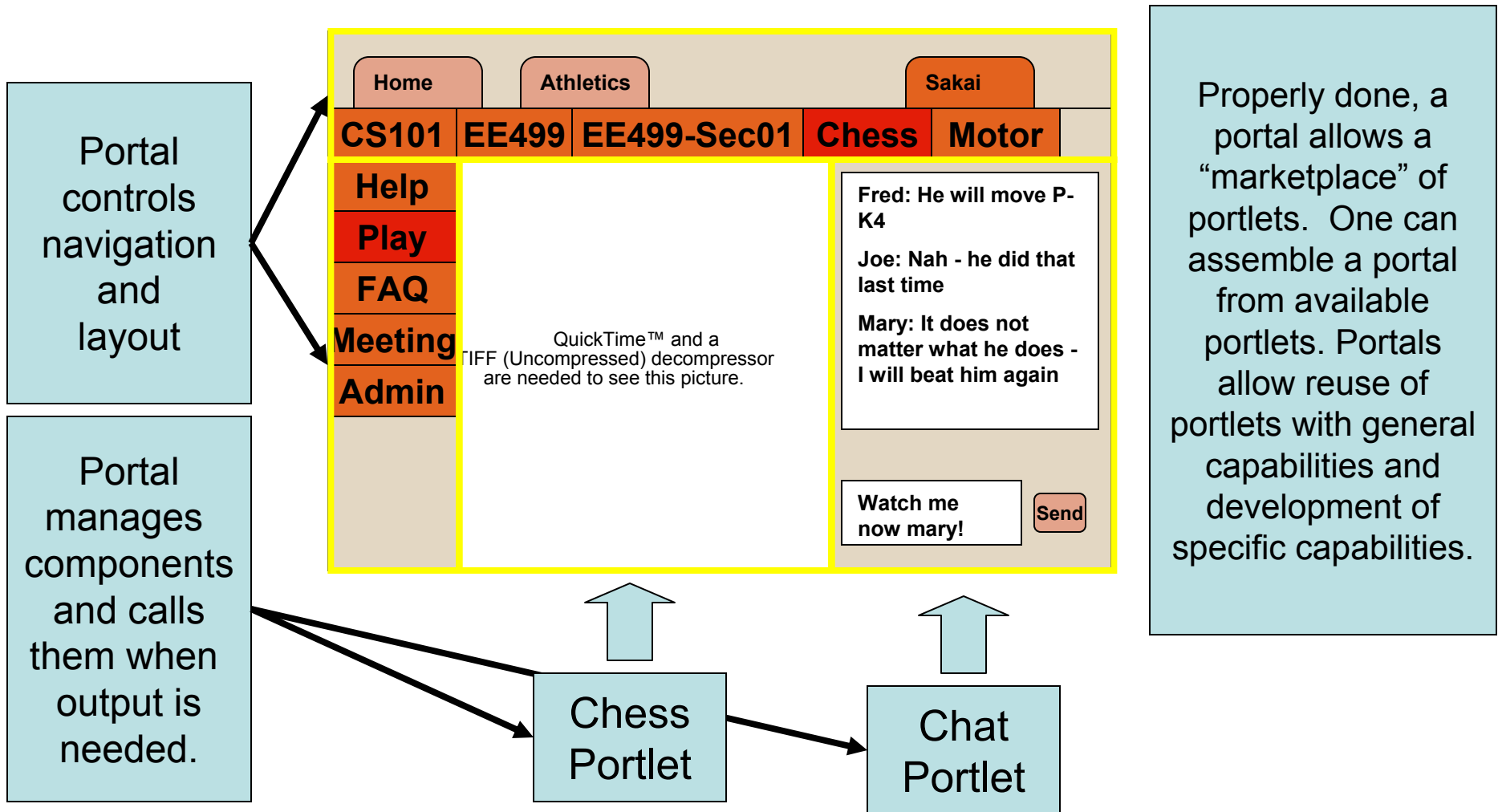
# Grid Portals

- Provide single installation of Globus for many people - many of whom cannot install software on servers or their desktop
- Provide access to and help manage users credentials
- Provide a single-point of contact to allow many elements of an application to be assembled

# Chalk Talk: School of Portals



# What is a Portal?



# How Do You Write a Portlet?

- Old way:
  - Write/Adapt some Perl - Gridport
  - Pick a Portlet API from: Jetspeed, CHEF, WebSphere, Plumtree, uPortal, Oracle, Microsoft (several versions), GridSphere
  - Have your code run on < 10% of the portals on the planet with little or no portability
- New Way:
  - Write JSR-168 (Portlet API) or WSRP (Web Services for Remote Portals)

# Aside: Why JSR-168/WSRP ?

**A slightly paraphrased conversation November 2003 at a Grid Portal meeting at Indiana University.**

**Charles Severance: (using his best expert from out-of-town voice) The architecture team from the CHEF project has done an evaluation of JSR-168 as best we can figure it out and have concluded that it is a bit too “HTML-oriented” - we want tools that are relevant beyond the web environment.**

**Geoffrey Fox (Indiana University): JSR-168 and WSRP will be standards - people will use them regardless of your opinion or your software.**

# Aside: Why JSR-168/WSRP ?

**A slightly paraphrased conversation November 2003 at a Grid Portal meeting at Indiana University.**

**Charles Severance: (using his best expert from out-of-town voice) The architecture team from the CHEF project has done an evaluation of JSR-168 as best we can figure it out and have concluded that it is a bit too “HTML-oriented” - we want tools that are relevant beyond the web environment.**

**Geoffrey Fox (Indiana University): JSR-168 and WSRP will be standards - people will use them regardless of your opinion or your software.**



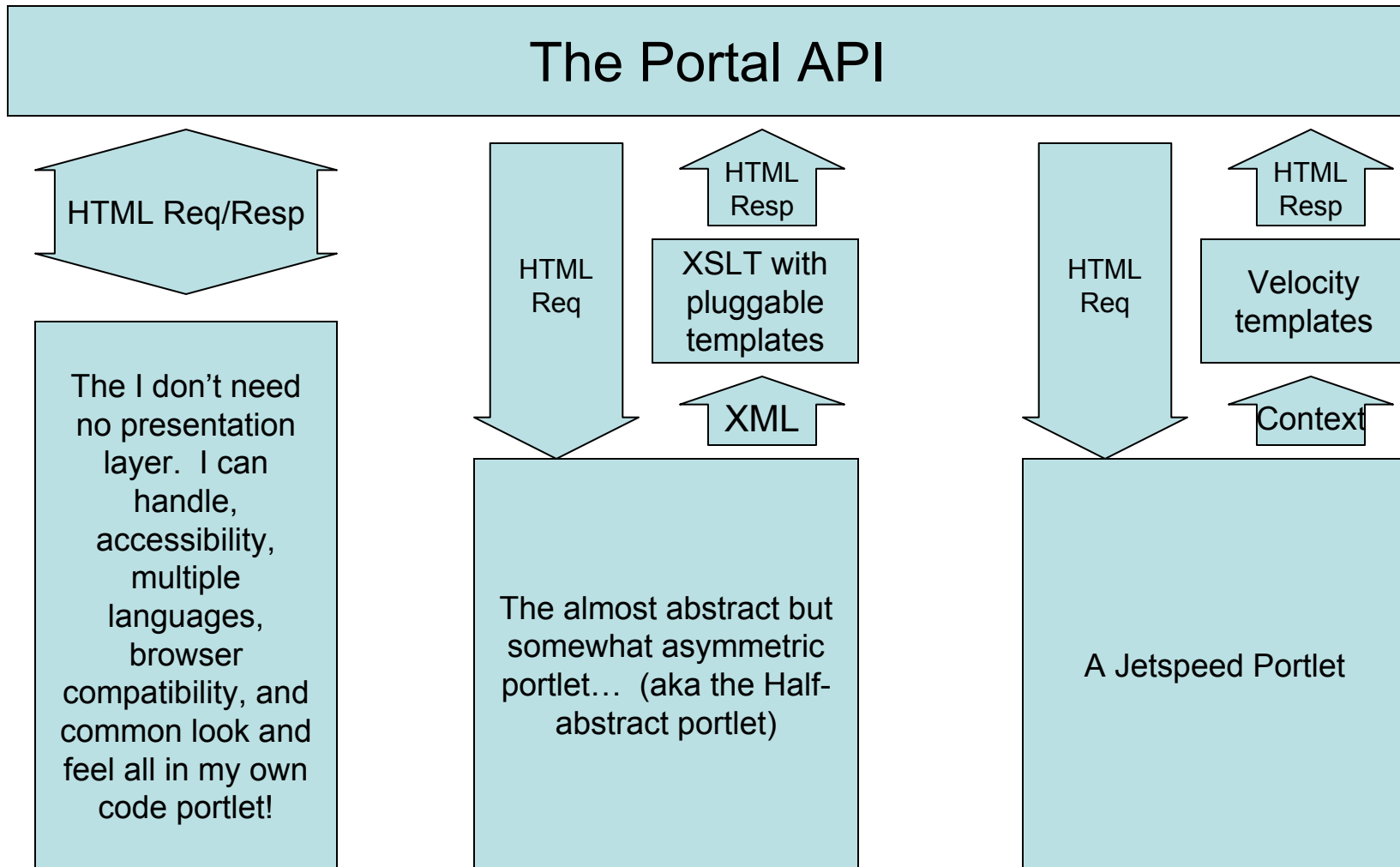
**Charles Severance: (pause) Good point. (sits down)**



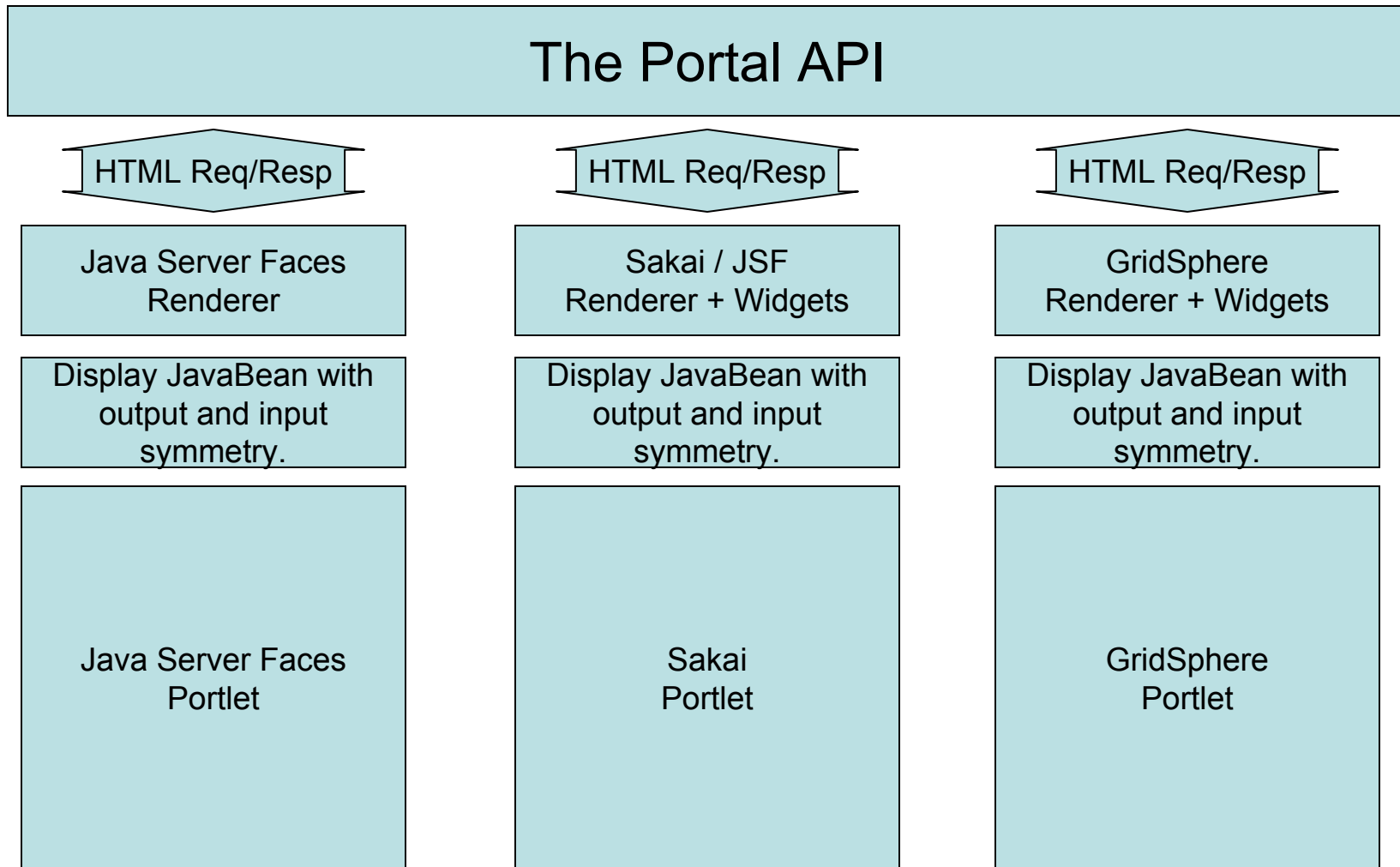
# How do you write a portlet?

- What presentation approach - raw HTML, XSLT, JavaBean-style presentation?
- Thick or thin?
- Do tools talk to a database?
- Web/Grid Services?
- Use an Applet?
- Use a Servlet?
- Is each portlet a stovepipe or do they cooperate?
- Do you rely on Portlet Services outside the standard or make your own cover API?
- What packages do you import?

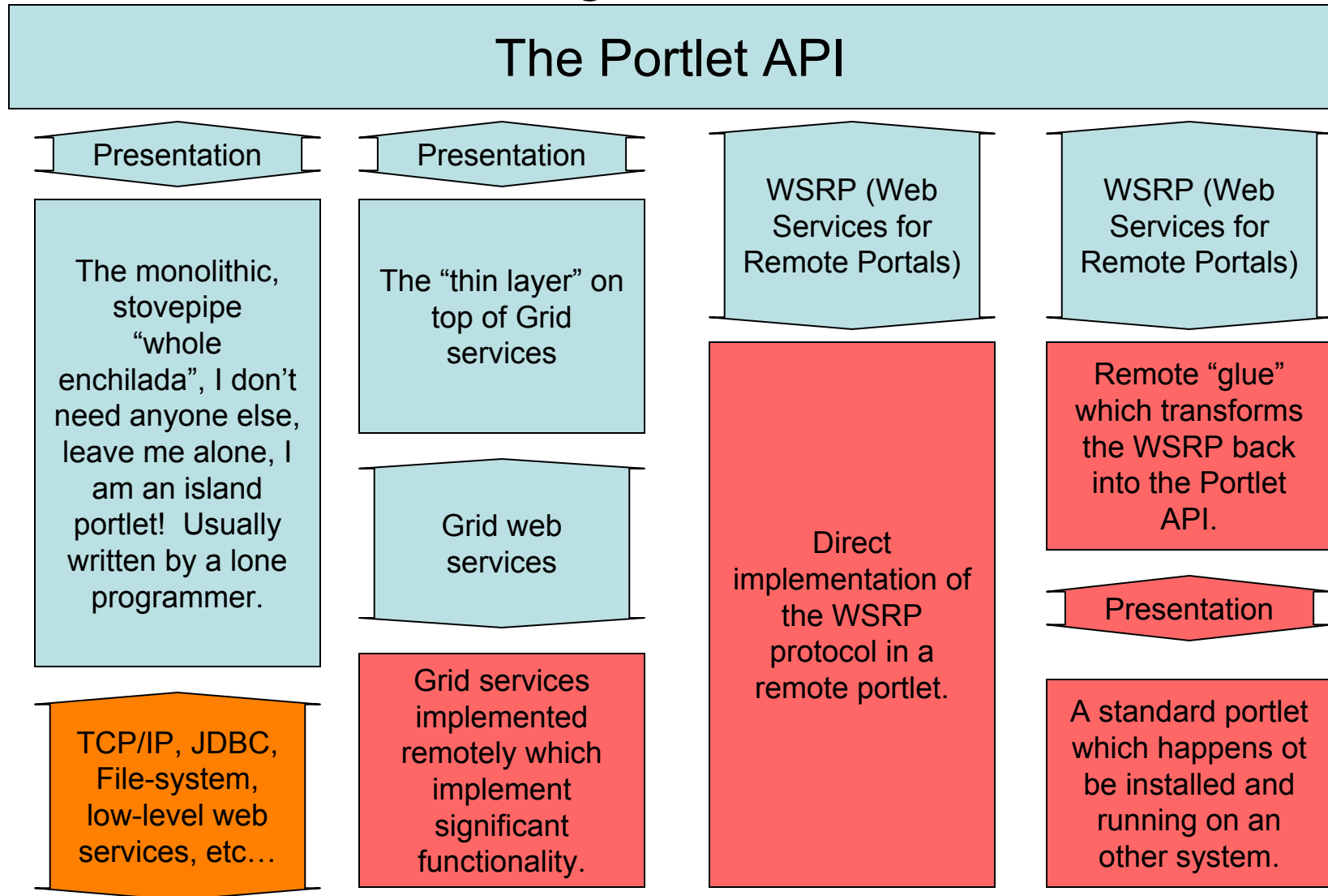
# Portlet Design Patterns - Presentation Layer - the old ways



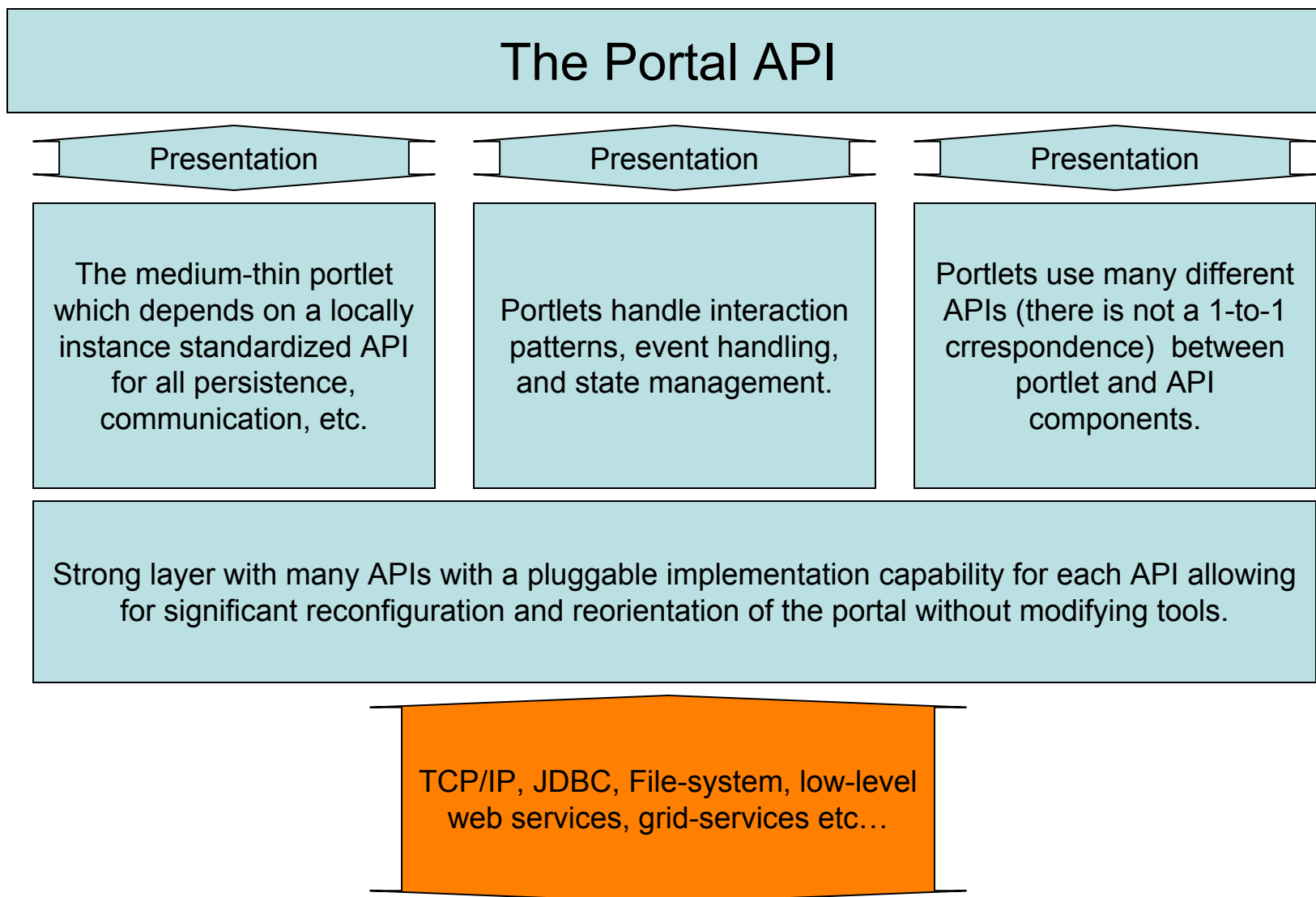
# Portlet Design Patterns - Symmetric Presentation Layers - the wave of the future



# Portlet Design Patterns - Where does the information come from / go to?



# Portlet Design Patterns - Where does the information come from / go to?



# Portlet Design Choices

- All of these decompositions are useful given the constraints of the portlet implementation environment.
- There is a general trade-off between interdependence and reuse of code.
- Interesting questions
  - Do portlets hide behind an opaque API (Sakai-style)?
  - Where is the tradeoff between a portlet orchestrating a lot of web services and simply using WSRP?
  - Is it ever a good idea to write code directly to WSRP or should we just use JSR-168?
- In reality, given that a portal will be (should be) built from components from many sources - all variants are likely.

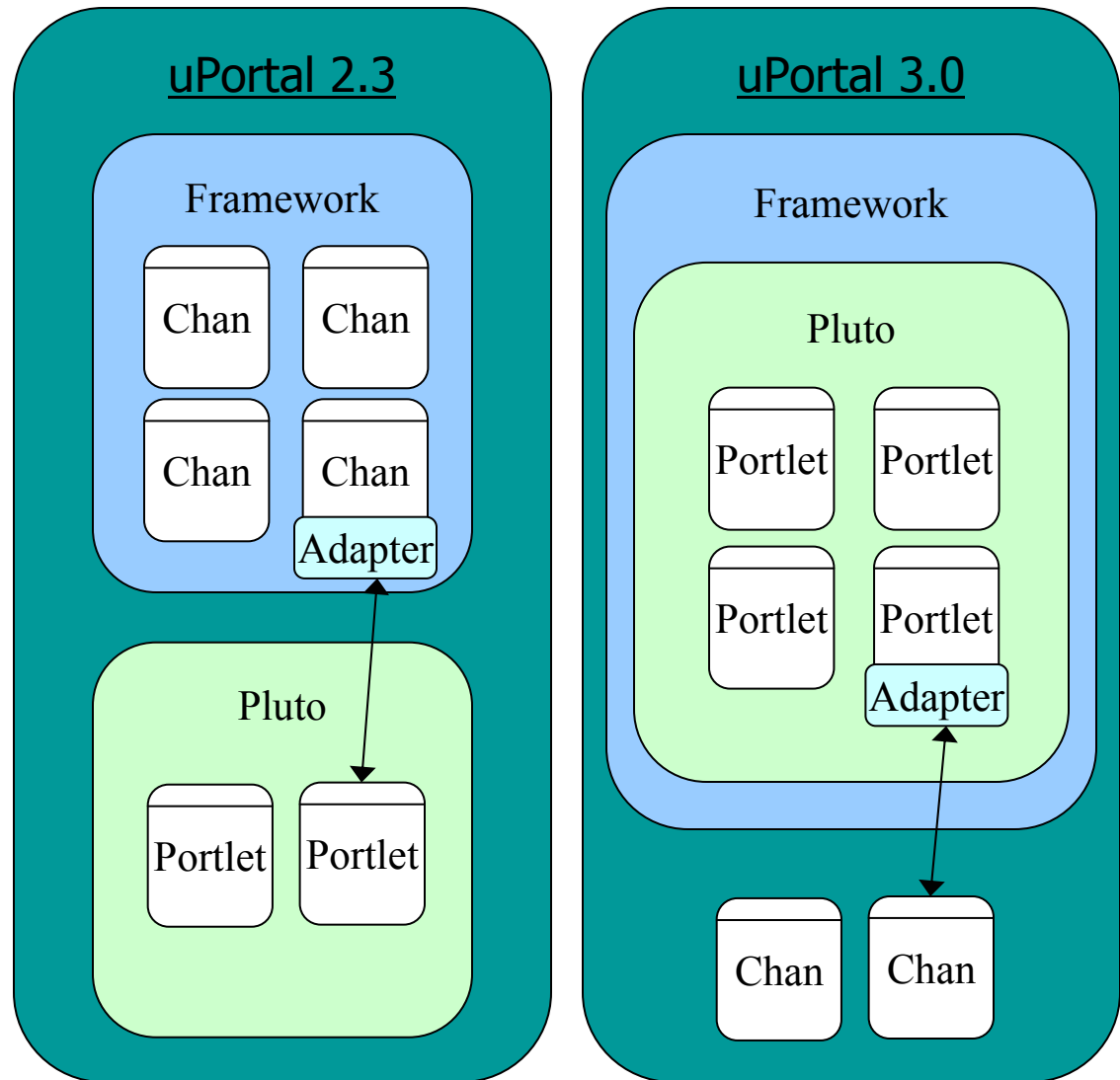


# Exciting possibilities

- If the WSRP to JSR-168 API works out well (there is much left to understand), each portal should both be a WSRP producer and consumer.
- This leads to significant opportunities for creating federated portals with seamless ability to place functionality and integrate it in different ways.
- There is much work to do in this area to fully realize this potential - it may lead to the need to a much richer WSRP based more on Grid concepts than web services concepts.

# uPortal Portlet Roadmap

- uPortal 2.3
  - Support Portlets (JSR-168) via adapter
- uPortal 3.0
  - Implement Portlet Specification (JSR-168)
  - Support IChannel via adapter



# What is next...

- Sakai Discussion - Building a portal with highly collaborative portlets with very strong presentation and API layering requirements.
- NEESGrid Discussion - Building a real-life Grid portal with software from many collaborators and solving the problems of a community of scientists...