

Introduction to GT3

The Globus Project™

Argonne National Laboratory
USC Information Sciences Institute

Copyright (C) 2003 University of Chicago and The University of Southern California. All Rights Reserved. This presentation is licensed for use under the terms of the Globus Toolkit Public License. See <http://www.globus.Org/toolkit/download/license.html> for the full text of this license.



<http://www.mcs.anl.gov/~childers/GT3IntroJune2003Print.ppt>

Introduction to GT3

- **Background**
 - The Grid Problem
 - The Globus Approach
 - OGSA & OGSF
 - Globus Toolkit
- **GT3 Architecture and Functionality: The Latest Refinement of the Globus Toolkit**
 - Core
 - Base Services
 - User-Defined Services
 - Future Directions
- **Installation and Administration**
 - Installation
 - Configuration
 - Debugging
 - Support
- **Important Things to Remember**

A Story of Evolution

- Definition of Grid problem has been stable since original Globus Project proposal in 1995
 - Though we've gotten better at articulating it
- But our approach to its solution has evolved:
 - From APIs and custom protocols...
 - to standard protocols...
 - to Grid services (OGSA).
- Driven by experience implementing and deploying the Globus Toolkit, and building real applications with it

What is a Grid?

- We believe there are three key criteria:
 - Coordinates distributed resources ...
 - using standard, open, general-purpose protocols and interfaces ...
 - to deliver non-trivial qualities of service.
- What is not a Grid?
 - A cluster, a network attached storage device, a scientific instrument, a network, etc.
 - Each is an important component of a Grid, but by itself does not constitute a Grid

Challenging Technical Requirements

- Dynamic formation and management of virtual organizations
- Discovery & online negotiation of access to services: who, what, why, when, how
- Configuration of applications and systems able to deliver multiple qualities of service
- Autonomic management of distributed infrastructures, services, and applications
- Management of distributed state
- Open, extensible, evolvable infrastructure

The Globus Project™

Making Grid computing a reality (since 1996)

- Close collaboration with real Grid projects in science and industry
- The Globus Toolkit®: Open source software base for building Grid infrastructure and applications
- Development and promotion of standard Grid protocols to enable interoperability and shared infrastructure
- Development and promotion of standard Grid software APIs to enable portability and code sharing
- Global Grid Forum: We co-founded GGF to foster Grid standardization and community

From APIs & Custom Protocols, To Standard Protocols

API

Application Programming Interface

- A specification for a set of routines to facilitate application development
 - Refers to definition, not implementation
- Often language-specific (or IDL)
 - Routine name, number, order and type of arguments; mapping to language constructs
 - Behavior or function of routine
- Examples of APIs
 - GSS-API (security), MPI (message passing)

Network Protocol

- A formal description of message formats and a set of rules for message exchange
 - Rules may define sequence of message exchanges
 - Protocol may define state-change in endpoint, e.g., file system state change
- Good protocols designed to do one thing
 - Protocols can be layered
- Examples of protocols
 - IP, TCP, TLS (was SSL), HTTP, Kerberos

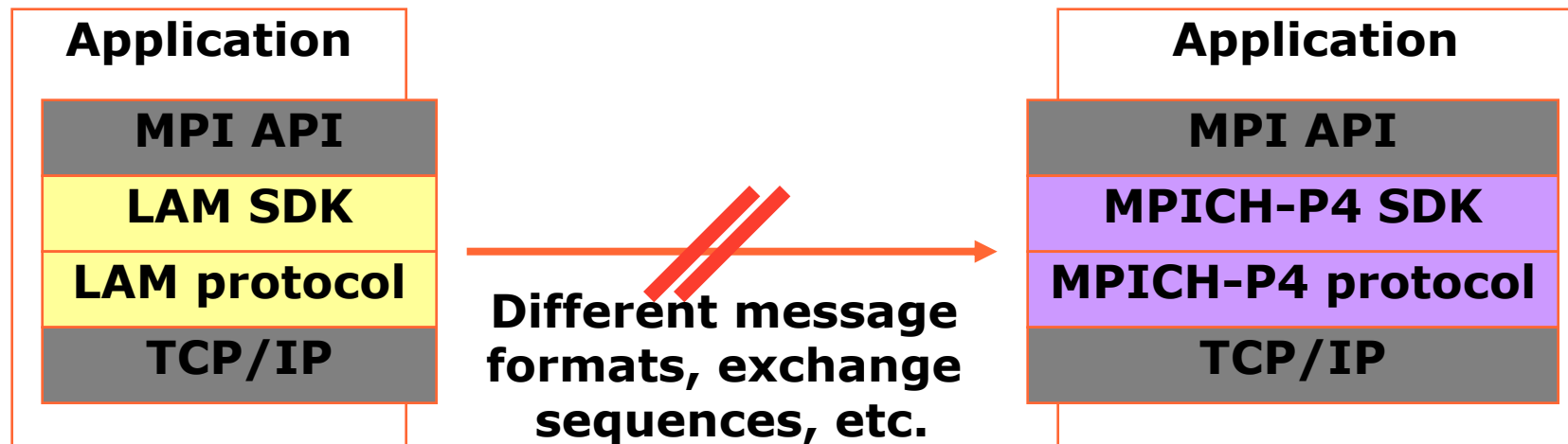
A Protocol can have Multiple APIs

- TCP/IP APIs include BSD sockets, Winsock, System V streams, ...
- The protocol provides **interoperability**: programs using different APIs can exchange information
- I don't need to know remote user's API



An API can have Multiple Protocols

- An API provides **portability**: any correct program compiles & runs on a platform
- Does not provide interoperability: all processes must link against same SDK
 - E.g., MPICH and LAM versions of MPI



Initial Focus On APIs and Custom Protocols

- Primary concern was allowing Grid applications to be built quickly, in order to demonstrate feasibility
- Good development APIs and SDKs mattered most
- Protocols were a means to an end
 - We borrowed and extended standard protocols to make life easier (e.g. LDAP)
 - We defined custom protocols (e.g. GRAM)

But Focus Shifted To Protocols

- As demand grew, customers worried about:
 - compatibility between versions (i.e. Stop changing the protocols!)
 - independent implementations of some components (i.e. What are the protocols?)
- Ubiquitous adoption demands open, standard protocols
 - Internet and Web as guides
 - Enables innovation/competition on end points
 - Avoid product/vendor lock-in

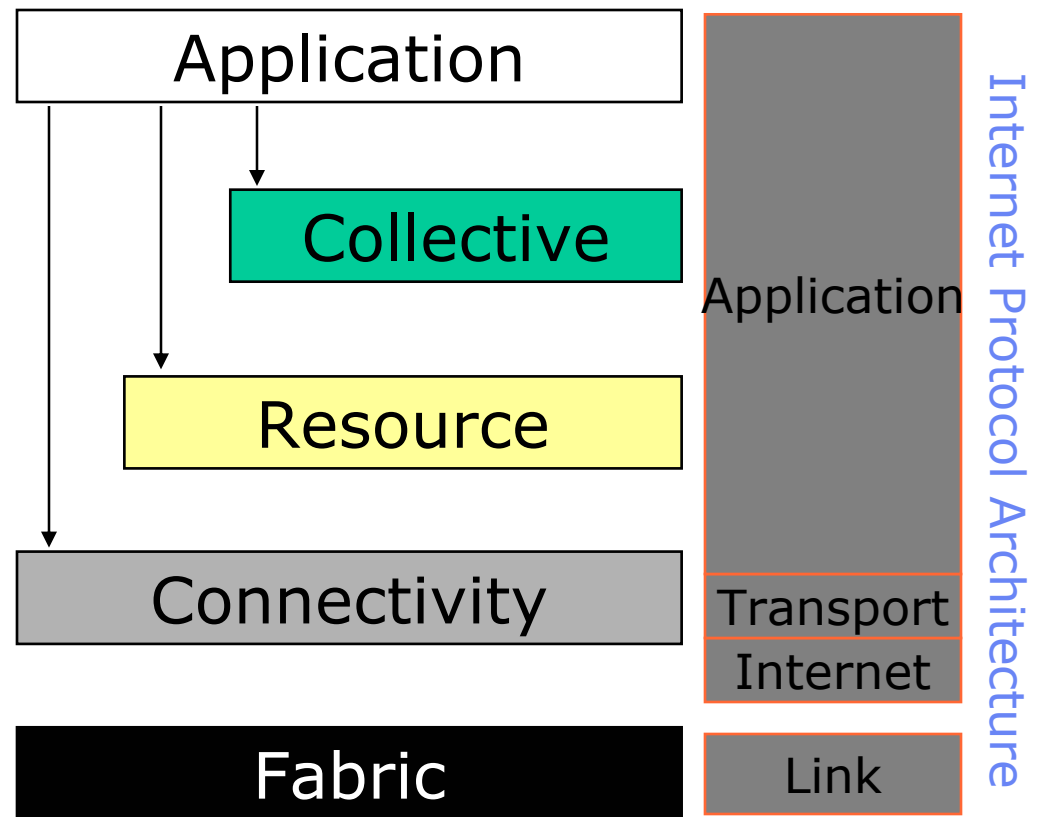
Layered Grid Architecture

“Coordinating multiple resources”: ubiquitous infrastructure services, app-specific distributed services

“Sharing single resources”: negotiating access, controlling use

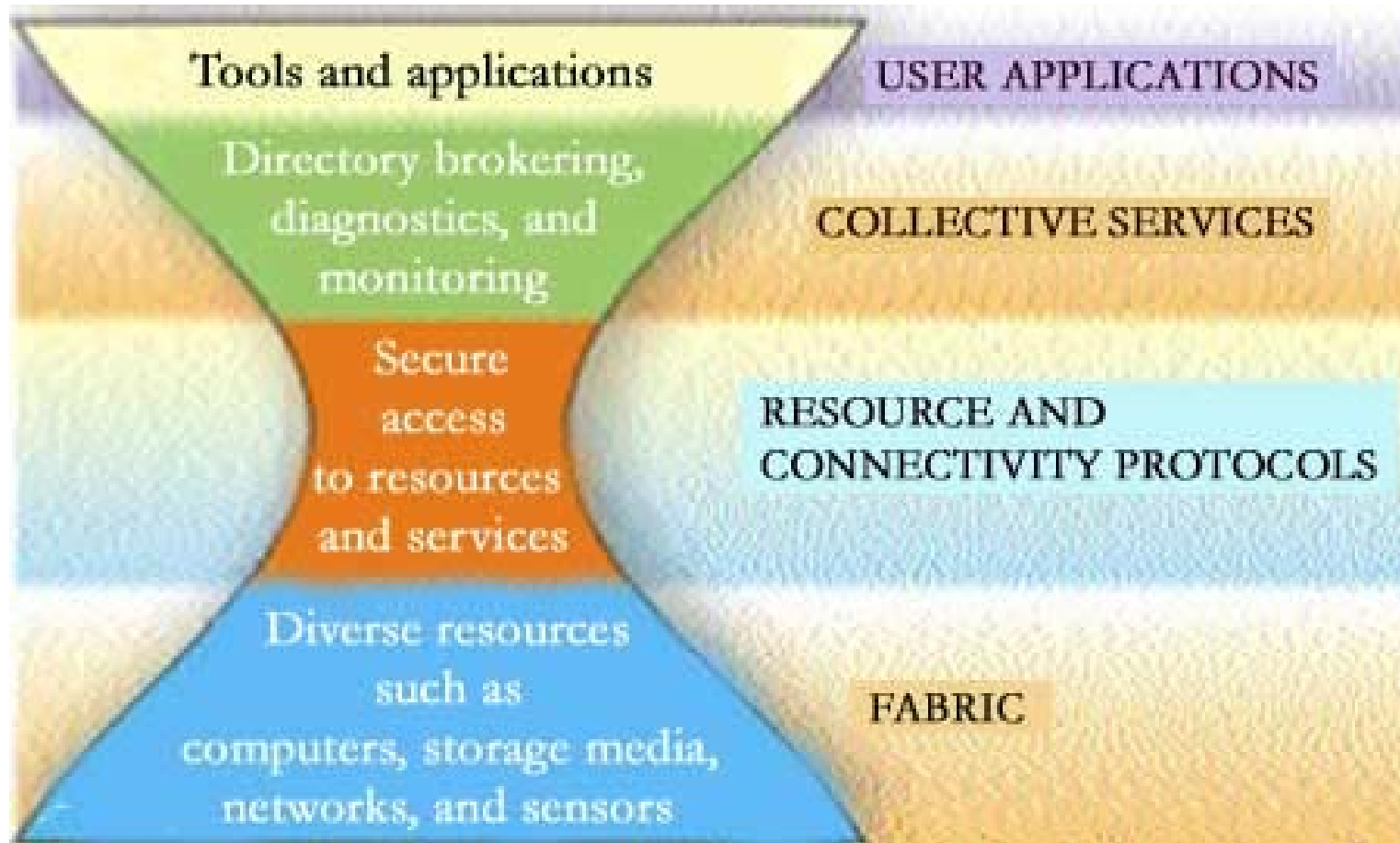
“Talking to things”: communication (Internet protocols) & security

“Controlling things locally”: Access to, & control of, resources

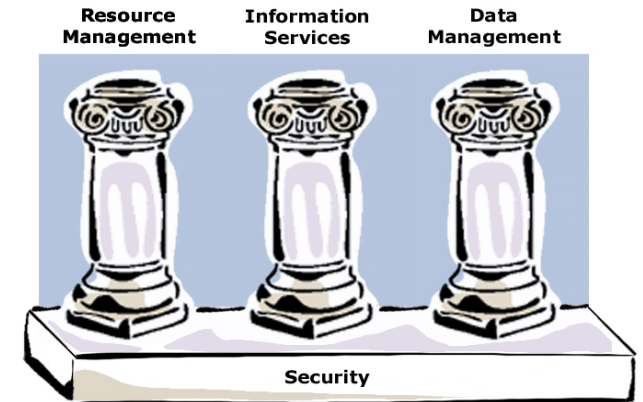


“The Anatomy of the Grid: Enabling Scalable Virtual Organizations”, Foster, Kesselman, Tuecke, Intl Journal of High Performance Computing Applications, 15(3), 2001.

Layers of Grid Architecture



GT2 Key Protocols



- The Globus Toolkit v2 (GT2) centers around four key protocols
 - Connectivity layer:
 - >*Security*: Grid Security Infrastructure (GSI)
 - Resource layer:
 - >*Resource Management*: Grid Resource Allocation Management (GRAM)
 - >*Information Services*: Grid Resource Information Protocol (GRIP)
 - >*Data Transfer*: Grid File Transfer Protocol (GridFTP)
- Also key collective layer protocols
 - Info Services, Replica Management, etc.

Protocol Standards Efforts

- X.509 Proxy Certificate Profile
 - GGF & IETF
- GridFTP Protocol
 - GGF

From Standard Protocols, To Grid Services

But Along The Way...

- Heterogeneous protocol base was hurting us
- Increasing number of virtual services that needed to be managed
- Web services (WSDL, SOAP) appeared

Web Services

- At the heart of Web services is:
 - WSDL: Language for defining abstract service interfaces
 - SOAP (and friends): Binding from WSDL to bytes on the wire
- Web services appears to offer a fighting chance at ubiquity (unlike CORBA)
- But Web services does not go far enough to serve a common base for the Grid...

Transient Service Instances

- “Web services” address discovery & invocation of persistent services
 - Interface to persistent state of entire enterprise
- In Grids, must also support transient service instances, created/destroyed dynamically
 - Interfaces to the states of distributed activities
 - E.g. workflow, video conf., dist. data analysis, subscription
- Significant implications for how services are managed, named, discovered, and used
 - In fact, much of Grid is concerned with the management of service instances

Standard Interfaces & Behaviors: Four Interrelated Concepts

- Naming and bindings
 - Every service instance has a unique name, from which can discover supported bindings
- Lifecycle
 - Service instances created by factories
 - Destroyed explicitly or via soft state
- Information model
 - Service data associated with Grid service instances, operations for accessing this info
 - Basis for service introspection, monitoring, discovery
- Notification
 - Interfaces for registering existence, and delivering notifications of changes to service data

Grid Evolution: Open Grid Services Architecture

- Refactor Globus protocol suite to enable common base and expose key capabilities
- Service orientation to virtualize resources and unify resources/services/information
- Embrace key Web services technologies for standard IDL, leverage commercial efforts
- Result: standard interfaces & behaviors for distributed system management: the Grid service

OGSA Structure

- A standard substrate: the Grid service
 - OGSI = Open Grid Service Infrastructure
 - Standard interfaces and behaviors that address key distributed system issues
 - Much borrowed from GT abstractions
- ... supports standard service specifications
 - Resource mgt, dbms, workflow, security, ...
 - Target of current & planned GGF efforts
- ... and arbitrary application-specific services based on these & other definitions

OGSI Grid Service Specification

- Defines WSDL conventions and GSDL extensions
 - For describing and structuring services
 - Working with W3C WSDL working group to drive GSDL extensions into WSDL
- Defines fundamental interfaces (using WSDL) and behaviors that define a Grid Service
 - A unifying framework for interoperability & establishment of total system properties

Globus Toolkit (GT)

- A software system addressing key technical problems in the development of Grid-enabled tools, services, and applications
 - Offer a modular set of orthogonal services
 - Middleware for building solutions, not turn-key
 - Enable *incremental* development of Grid-enabled tools and applications
 - Implement and inform Grid standards
 - Available under liberal open source license
 - Large community of developers & users
 - Multiple commercial support providers

Why Open Source is Important

- Leverages large body of code and experience
 - Efforts of a large e-Science community
- Encourages adoption of open standards
 - Reference implementation, community pressure
- Facilitates integration of new platforms
 - Port the implementation
- Allows vendors to focus on value add
 - Platforms, integration, higher-level services, turnkey applications, training, support

OGSA and the Globus Toolkit

- Technically, OGSA enables
 - Refactoring of protocols (GRAM, MDS, GridFTP), *while preserving all GT concepts/features!*
 - Integration with hosting environments: simplifying components, distribution, etc.
 - Greatly expanded standard service set
- Pragmatically, we are proceeding as follows
 - Develop open source OGSA implementation
 - > Globus Toolkit 3.0; supports Globus Toolkit 2.0 APIs
 - Partnerships for service development
 - Also expect commercial value-adds

GT2 Evolution To GT3

- What happened to the GT2 key protocols?
 - Security: Adapting X.509 proxy certs to integrate with emerging WS standards
 - GRIP/LDAP: Abstractions integrated into OGSI as serviceData
 - GRAM: ManagedJobFactory and related service definitions
 - GridFTP: Unchanged in 3.0, but will evolve into OGSI-compliant service in 2004
- Also rendering collective services in terms of OGSI: RFT, RLS, etc.

GT Timeline

- GT 1.0: *1998*
 - GRAM, MDS
- GT 2.0: *2001*
 - GridFTP, packaging, reliability
- GT3 Technology Preview: *Apr-Dec 2002*
 - Tracking OGSI definition
- GT3.0 Alpha: *Jan 2003*
 - OGSI Base, GT2 functionality
- GT3.0 Production: *June 2003*
 - Tested, documented, etc.

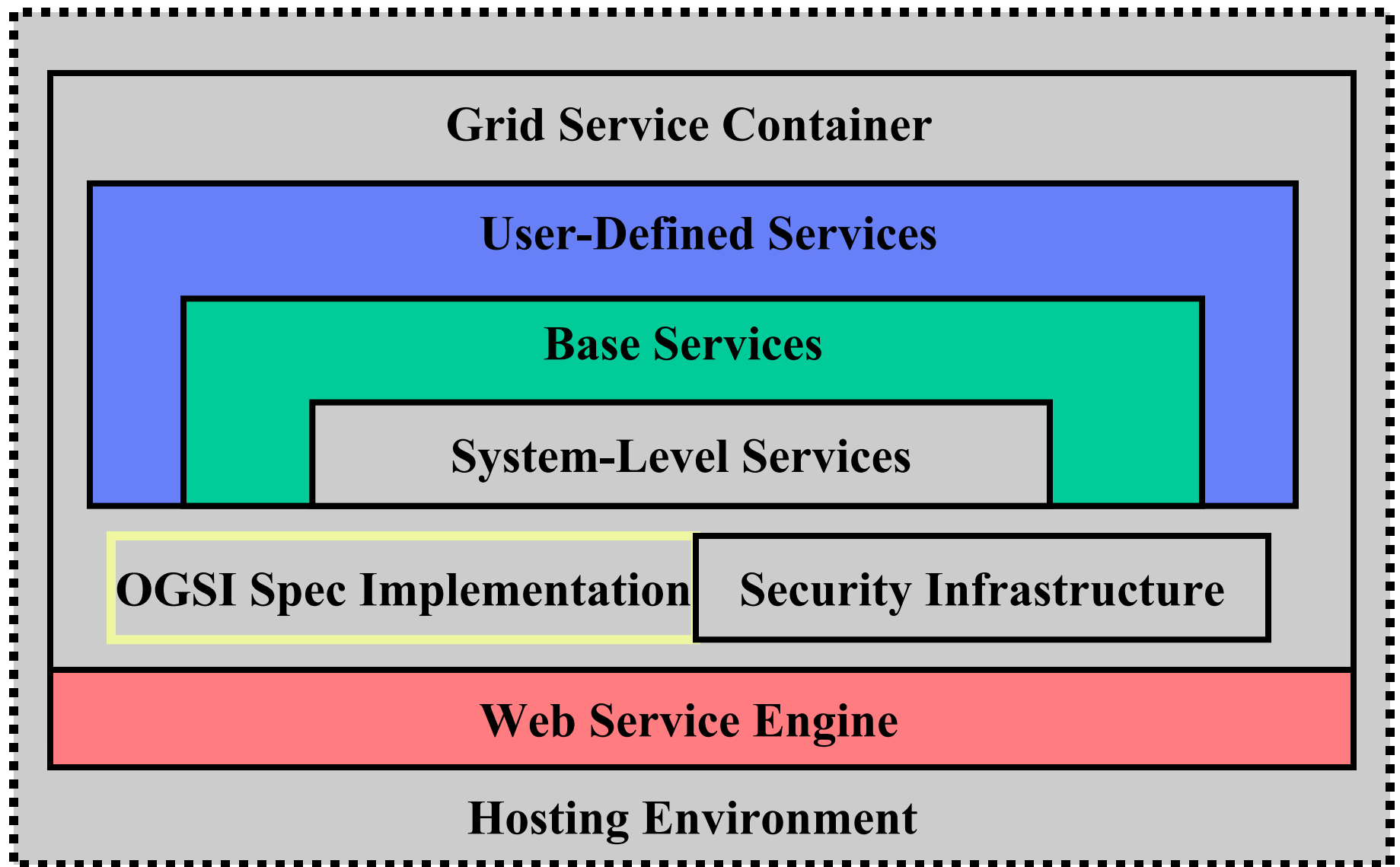
Summary

- The Grid: Coordinates resources that are not subject to centralized control; using standard, open, general-purpose protocols and interfaces; to deliver non-trivial qualities of service.
- Considerable impact within eScience, growing interest & adoption within eBusiness
- Globus Toolkit an open source, defacto standard source of protocol and API definitions—and reference implementations
- GT3 is evolution of the Globus Toolkit path

Introduction to GT3

- **Background**
 - The Grid Problem
 - The Globus Approach
 - OGSA & OGSF
 - Globus Toolkit
- **GT3 Architecture and Functionality: The Latest Refinement of the Globus Toolkit**
 - Core
 - Base Services
 - User-Defined Services
 - Future Directions
- **Installation and Administration**
 - Installation
 - Configuration
 - Debugging
 - Support
- **Important Things to Remember**

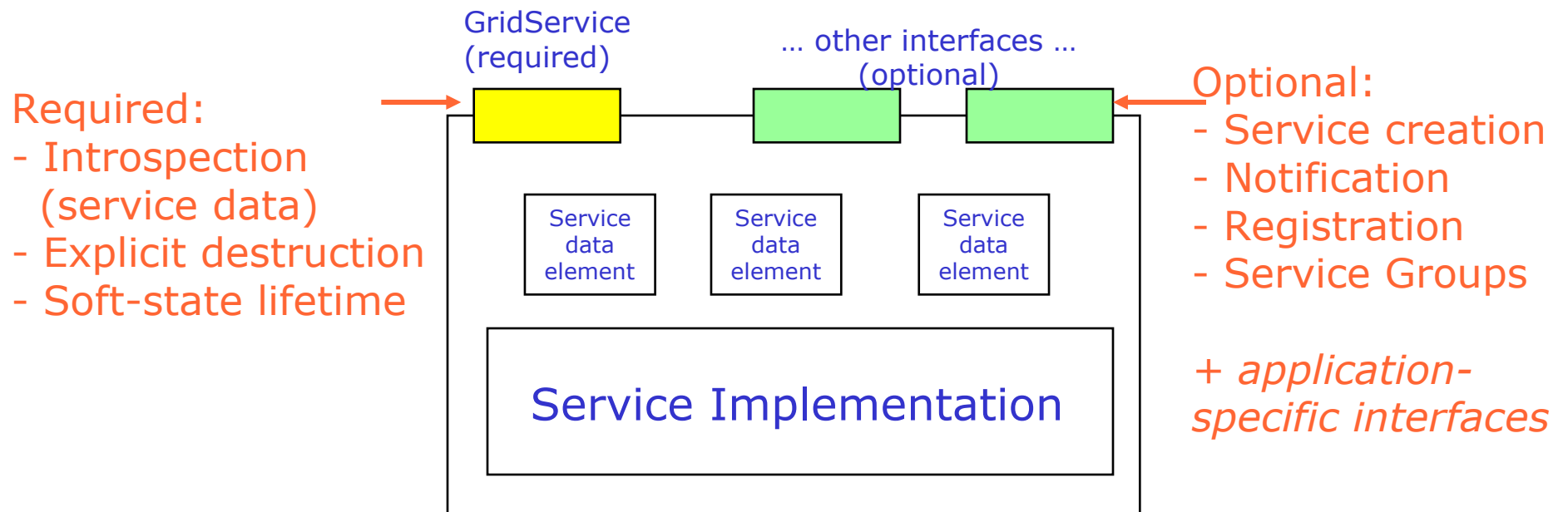
GT-OGSA Grid Service Infrastructure



GT3 Core

GT3 Core: OGSI Specification

The Specification Defines how Entities can Create, Discover and Interact with a Grid Service



Service locator

- Includes 0 or more Grid Service Handles (GSHs)
- Includes 0 or more Grid Service References (GSRs)

GT3 Core: OGSI Implementation

- GT3 includes a set of primitives that implement the interfaces and behaviors defined in the latest version of the OGSI Specification
- The implementation supports a declarative programming model in which GT3 users can compose OGSI-Compliant grid services by plugging the desired primitives into their implementation

GT3 Core: OGSI Specification (cont.)

GridService portType

- Defines the fundamental behavior of a Grid Service
 - Introspection
 - Discovery
 - Soft State Lifetime Management
- Mandated by the Spec

GT3 Core: OGSI Specification (cont.)

Factory portType

- Factories create services
- Factories are typically persistent services
- Factory is an optional OGSI interface

(Grid Services can also be instantiated by other mechanisms)

GT3 Core: OGSI Specification (cont.)

Notification portTypes

- A subscription for notification causes the creation of a NotificationSubscription service
- NotificationSinks are not required to implement the GridService portType
- Notifications can be set on Service Data Elements
- Notification portTypes are optional

GT3 Core: OGSI Specification (cont.)

Service group portTypes

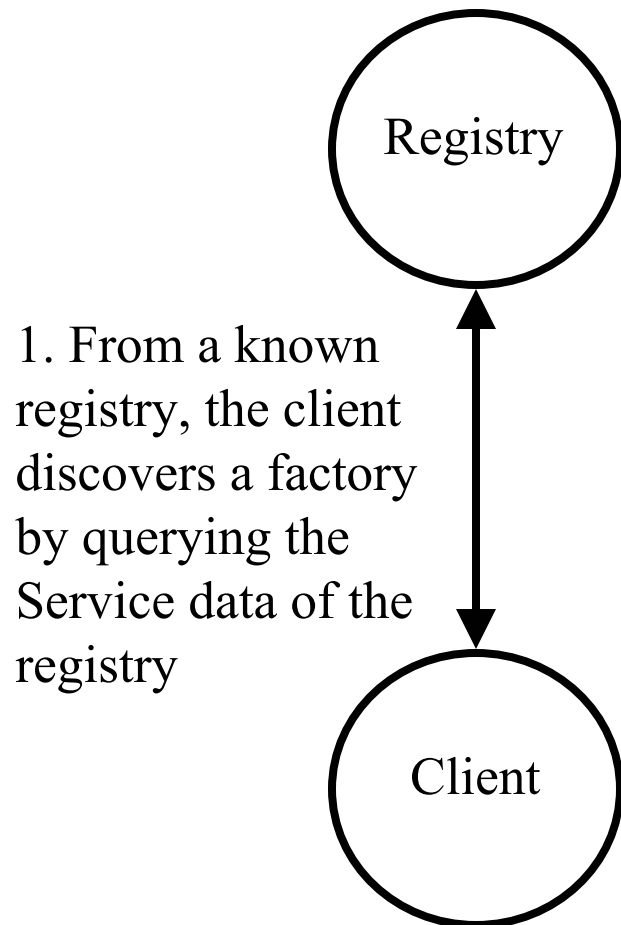
- A ServiceGroup is a grid service that maintains information about a group of other grid services
- The classic registry model can be implemented with the ServiceGroup portTypes
- A grid service can belong to more than one ServiceGroup
- Members of a ServiceGroup can be heterogenous or homogenous
- Each entry in a service group can be represented as its own service
- Service group portTypes are optional OGSI interfaces

GT3 Core: OGSI Specification (cont.)

HandleResolver portType

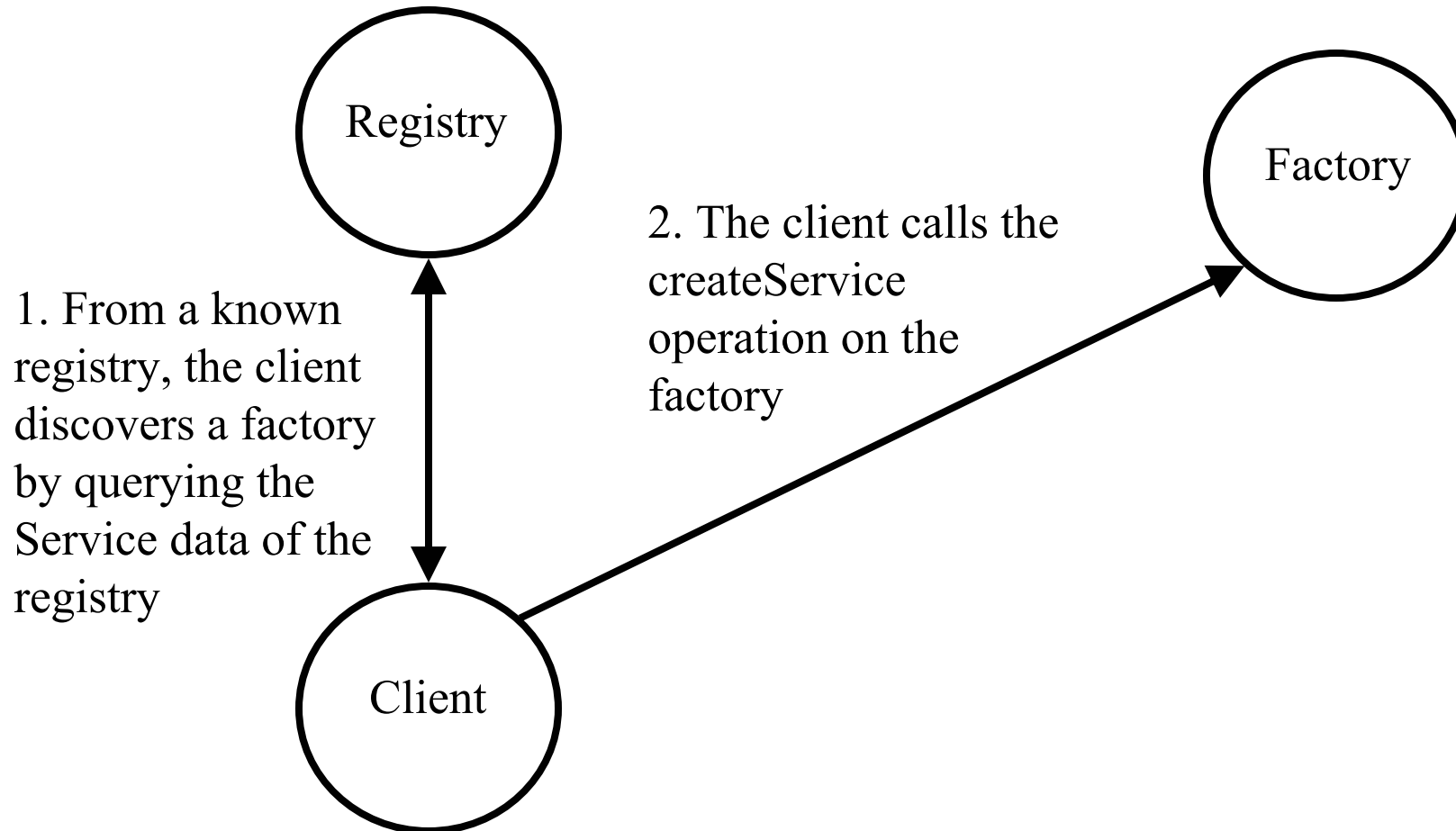
- Defines a means for resolving a GSH (Grid Service Handle) to a GSR (Grid Service Reference)
 - A GSH points to a Grid Service
(GT3 uses a hostname-based GSH scheme)
 - A GSR specifies how to communicate with the Grid Service
(GT3 currently supports SOAP over HTTP, so GSRs are in WSDL format)
- HandleResolver is an optional OGSI interface

A Service Creation Scenario*

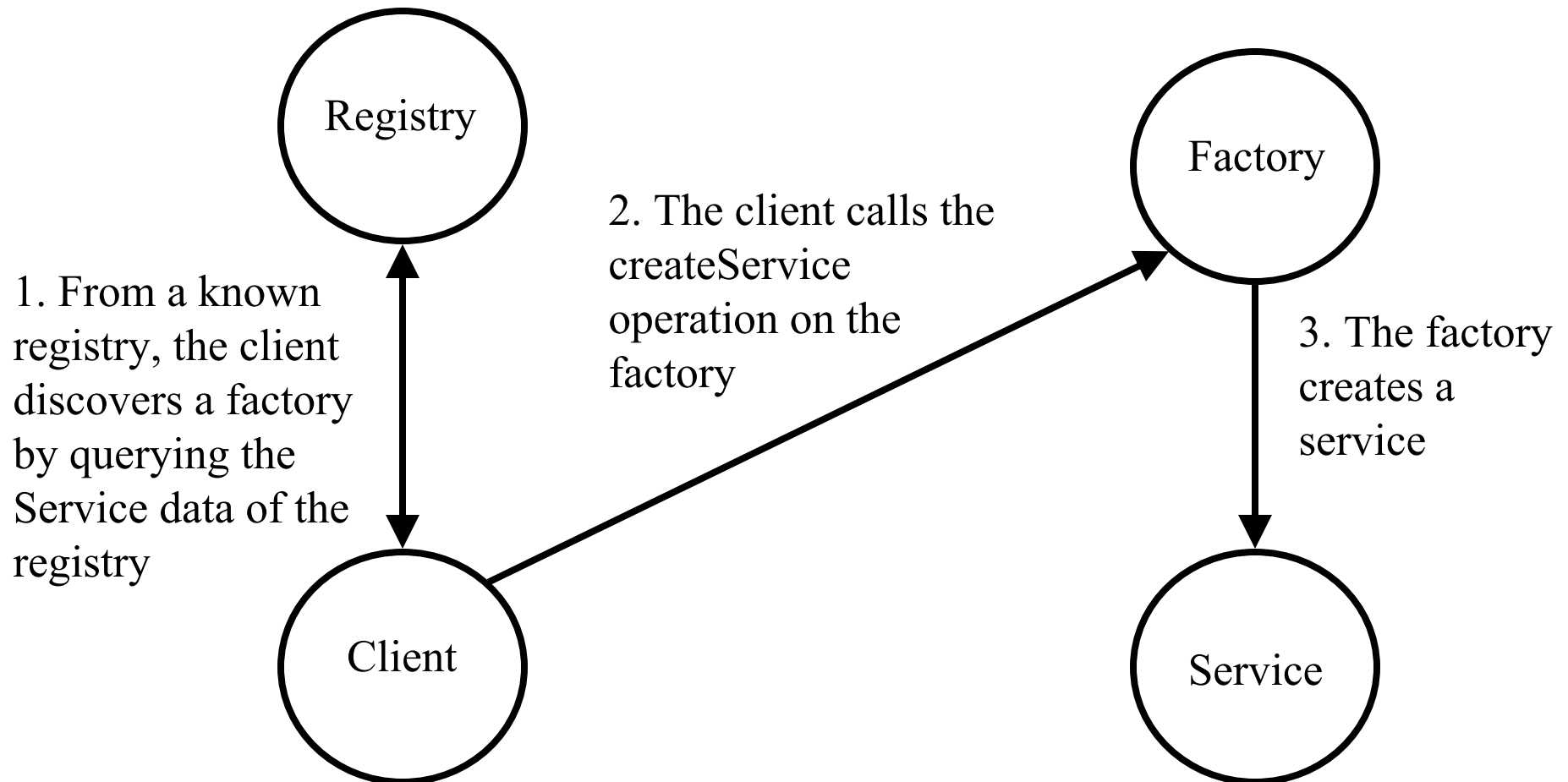


* The scenarios in this presentation are offered as examples and are not prescriptive

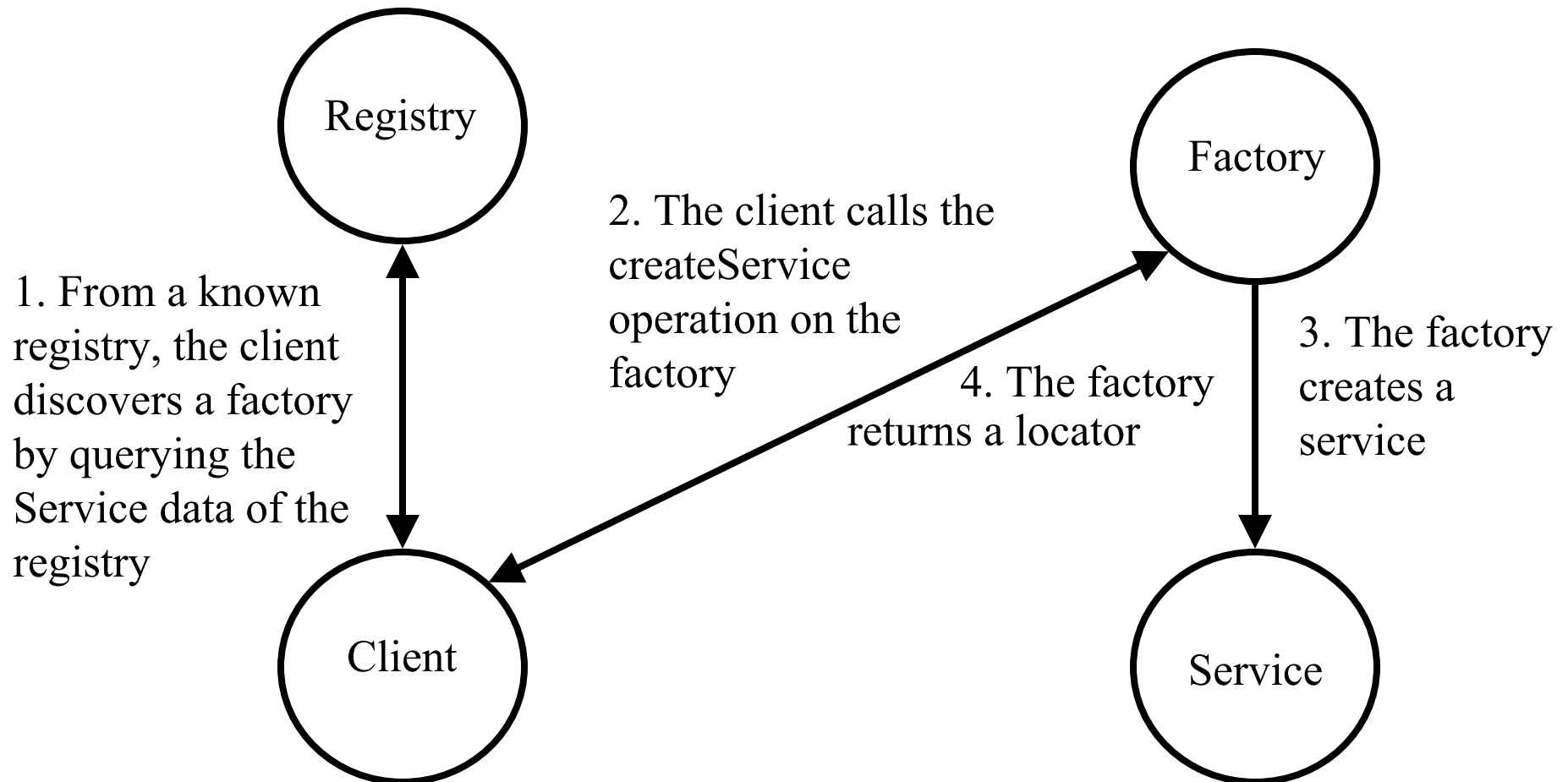
A Service Creation Scenario



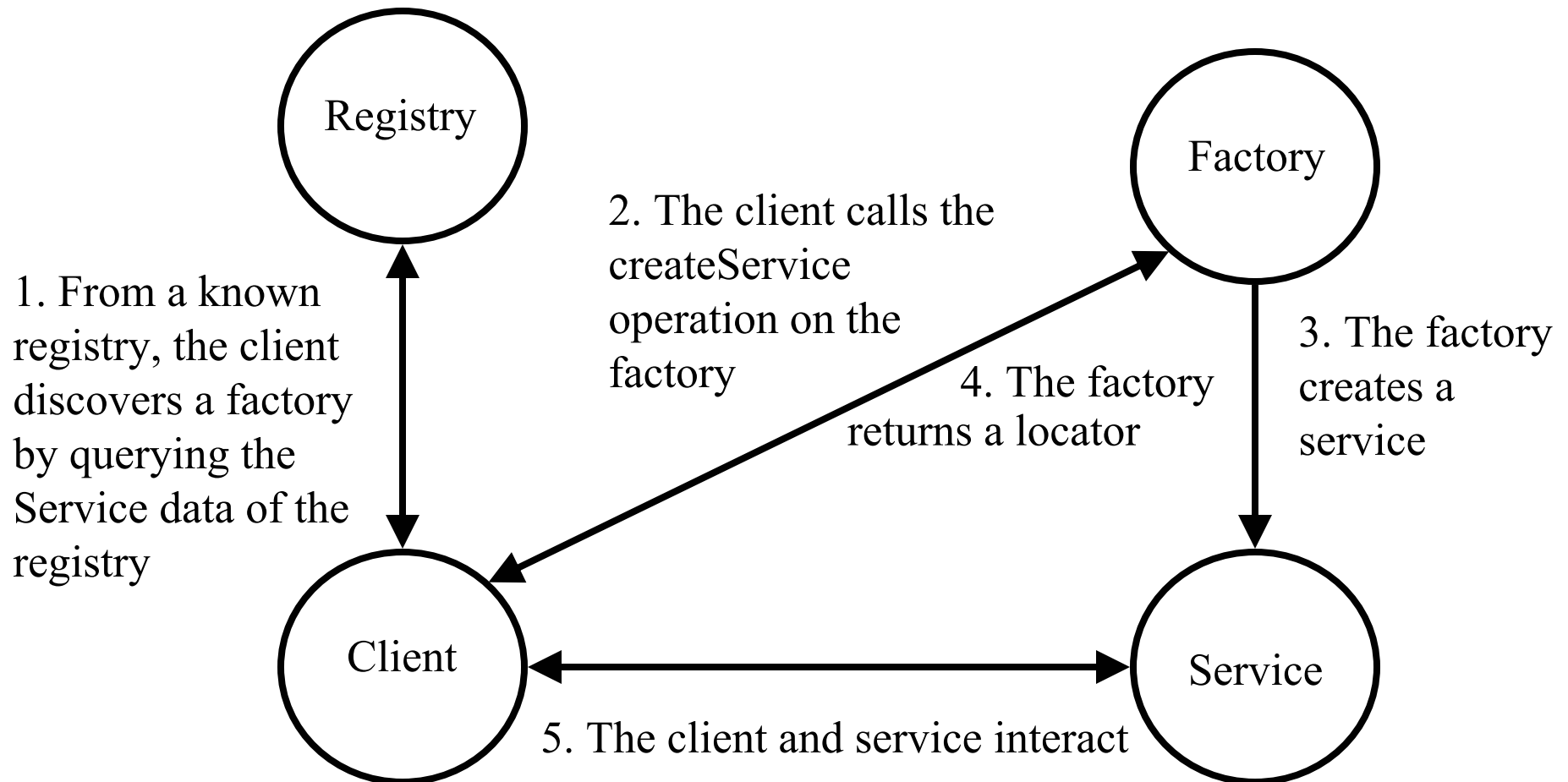
A Service Creation Scenario



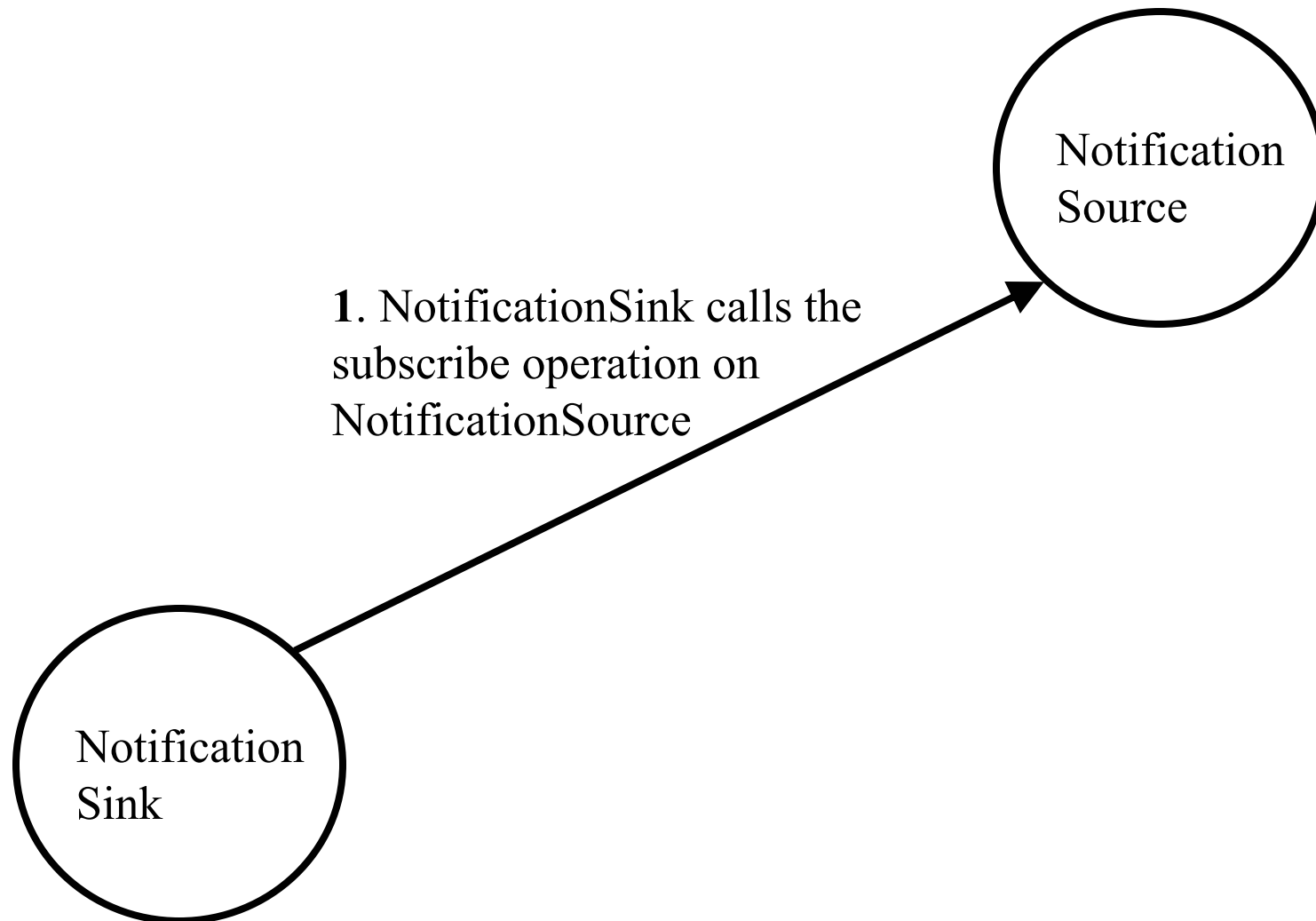
A Service Creation Scenario



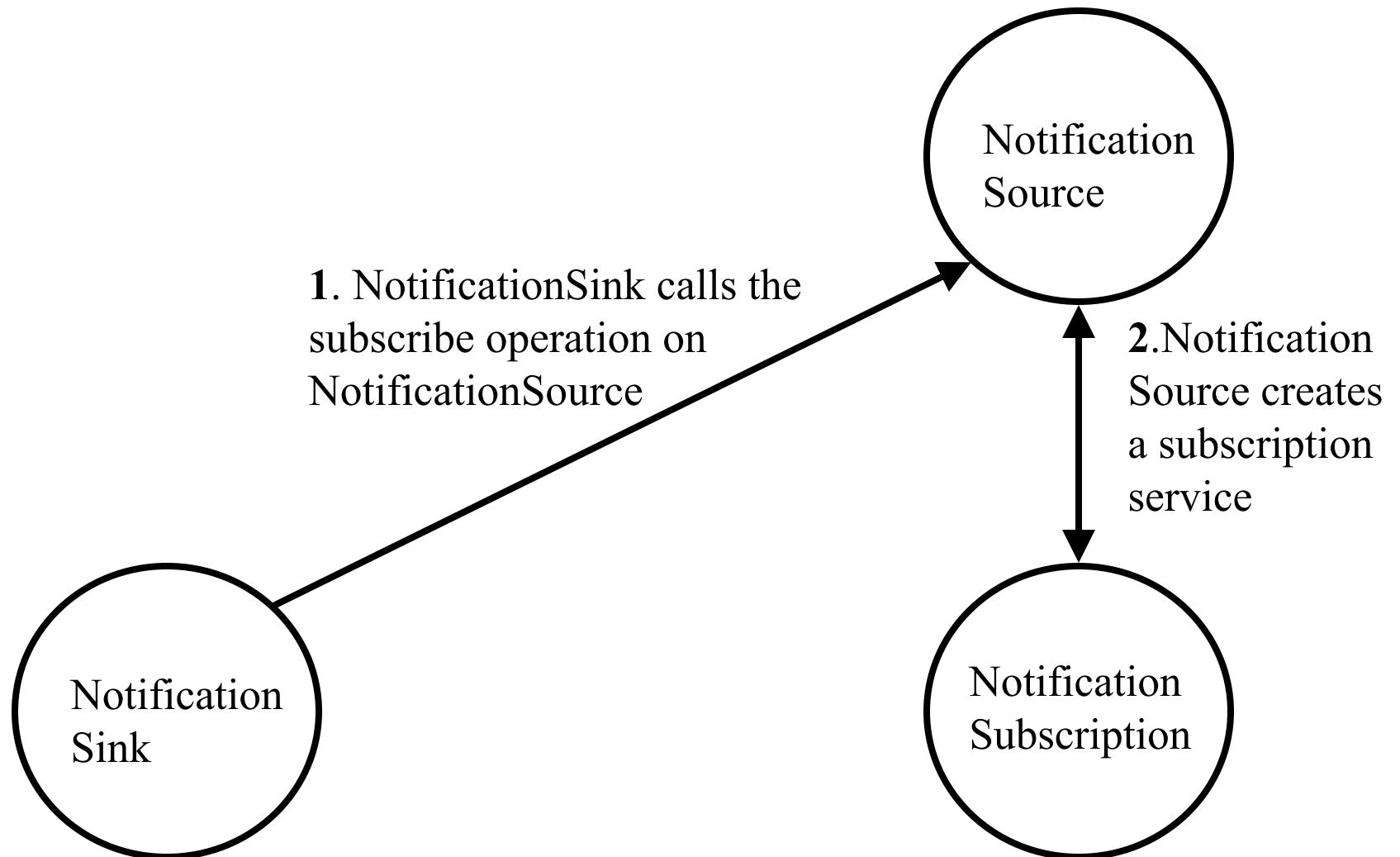
A Service Creation Scenario



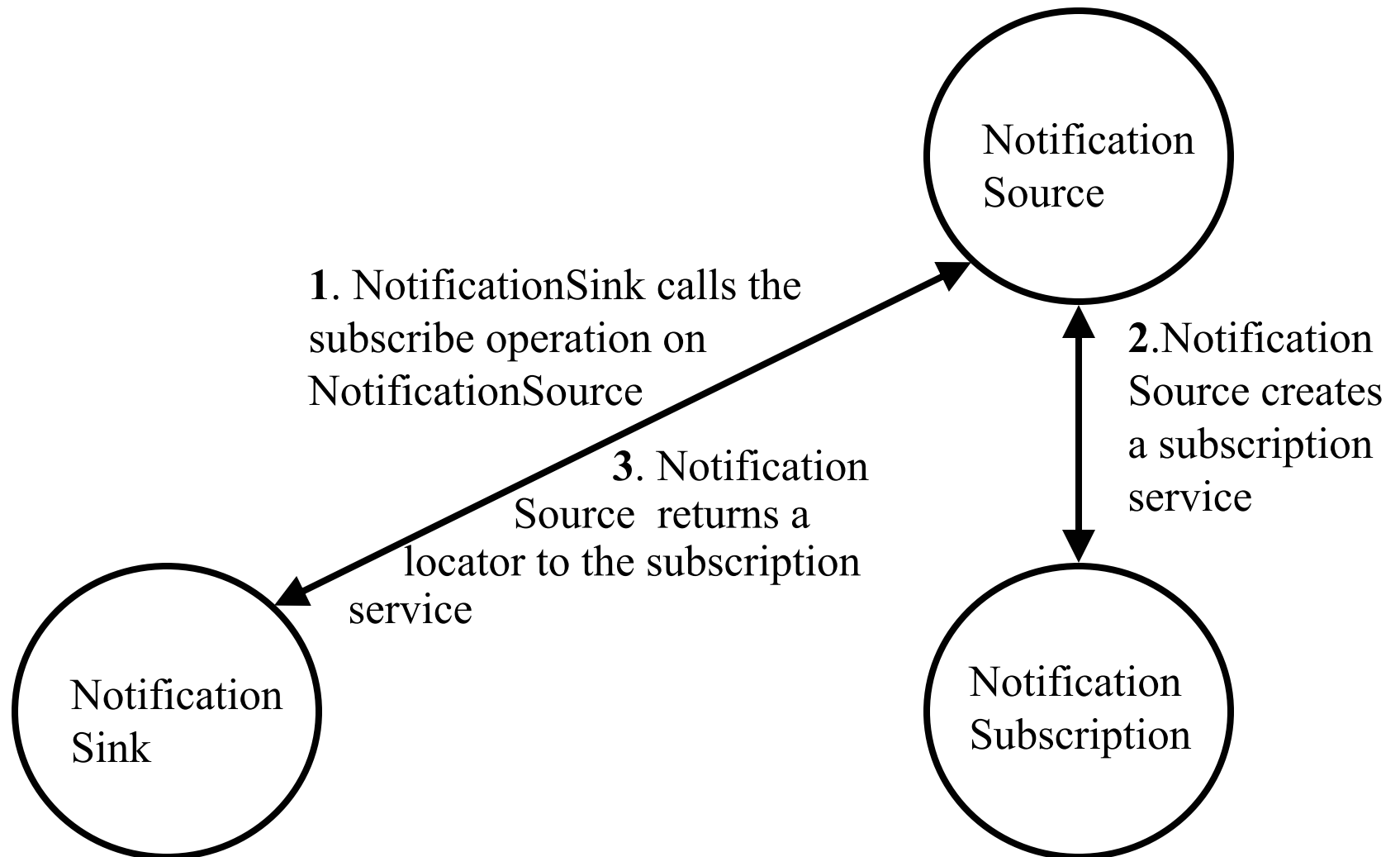
A Notification Scenario



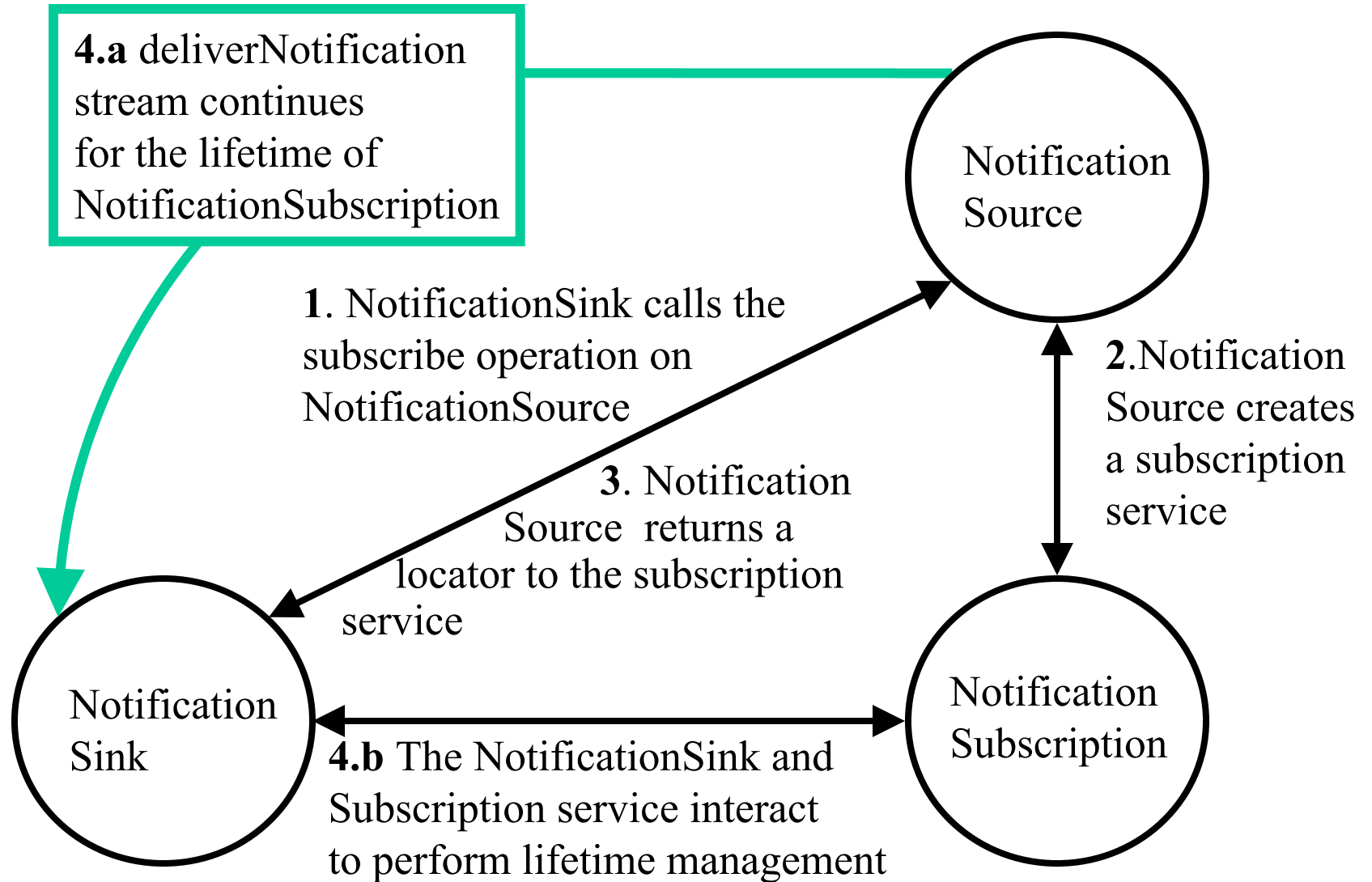
A Notification Scenario



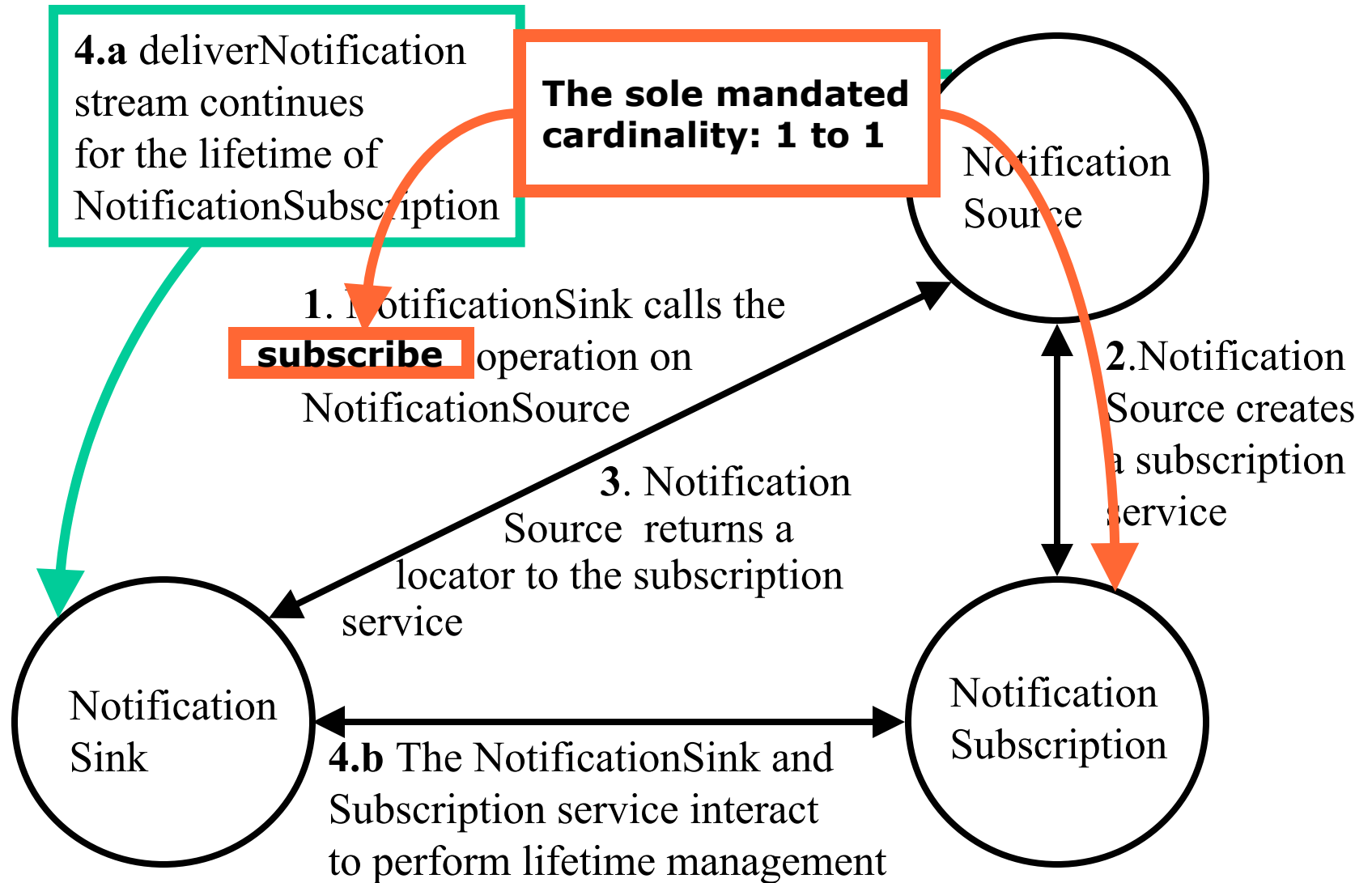
A Notification Scenario



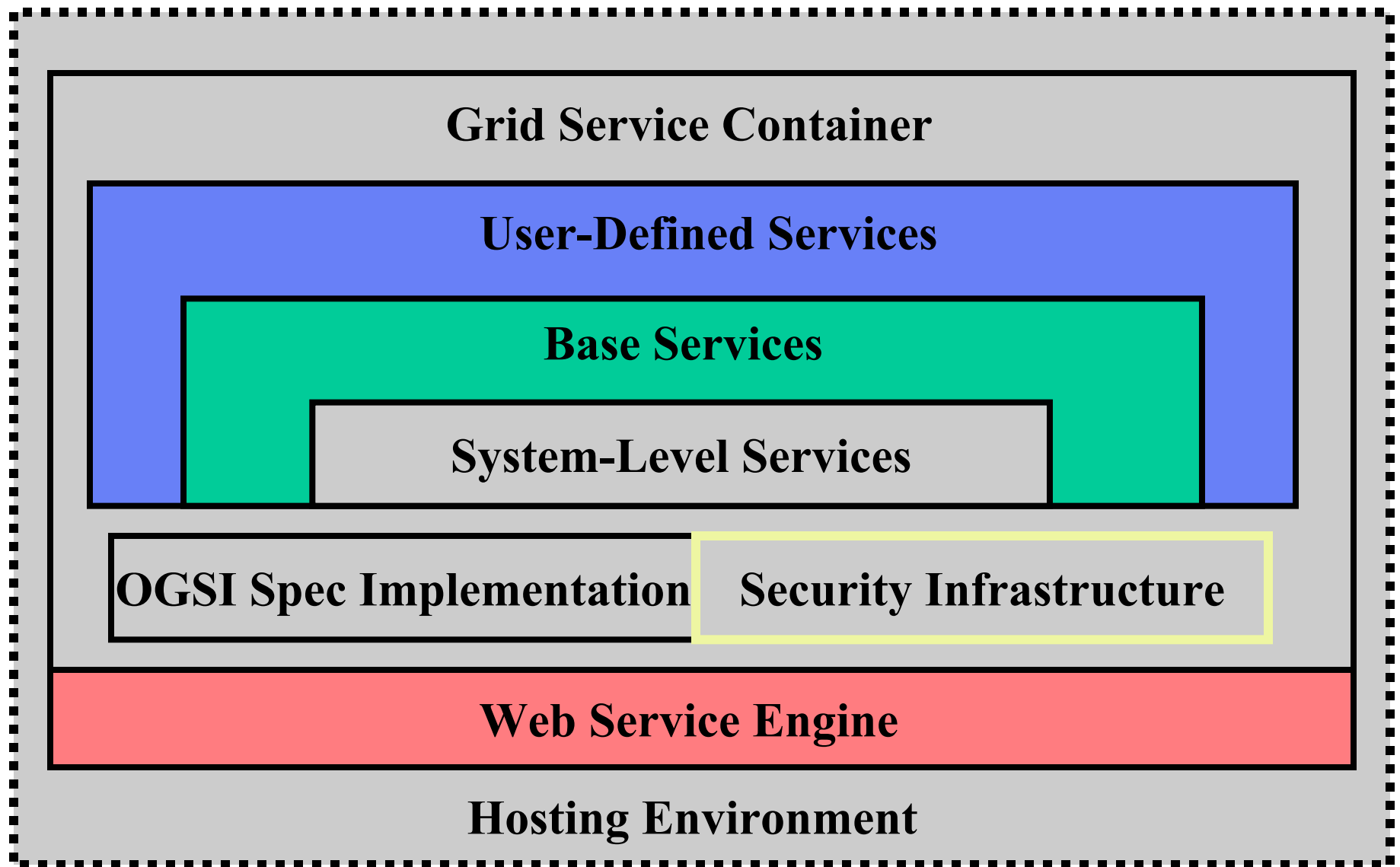
A Notification Scenario



A Notification Scenario



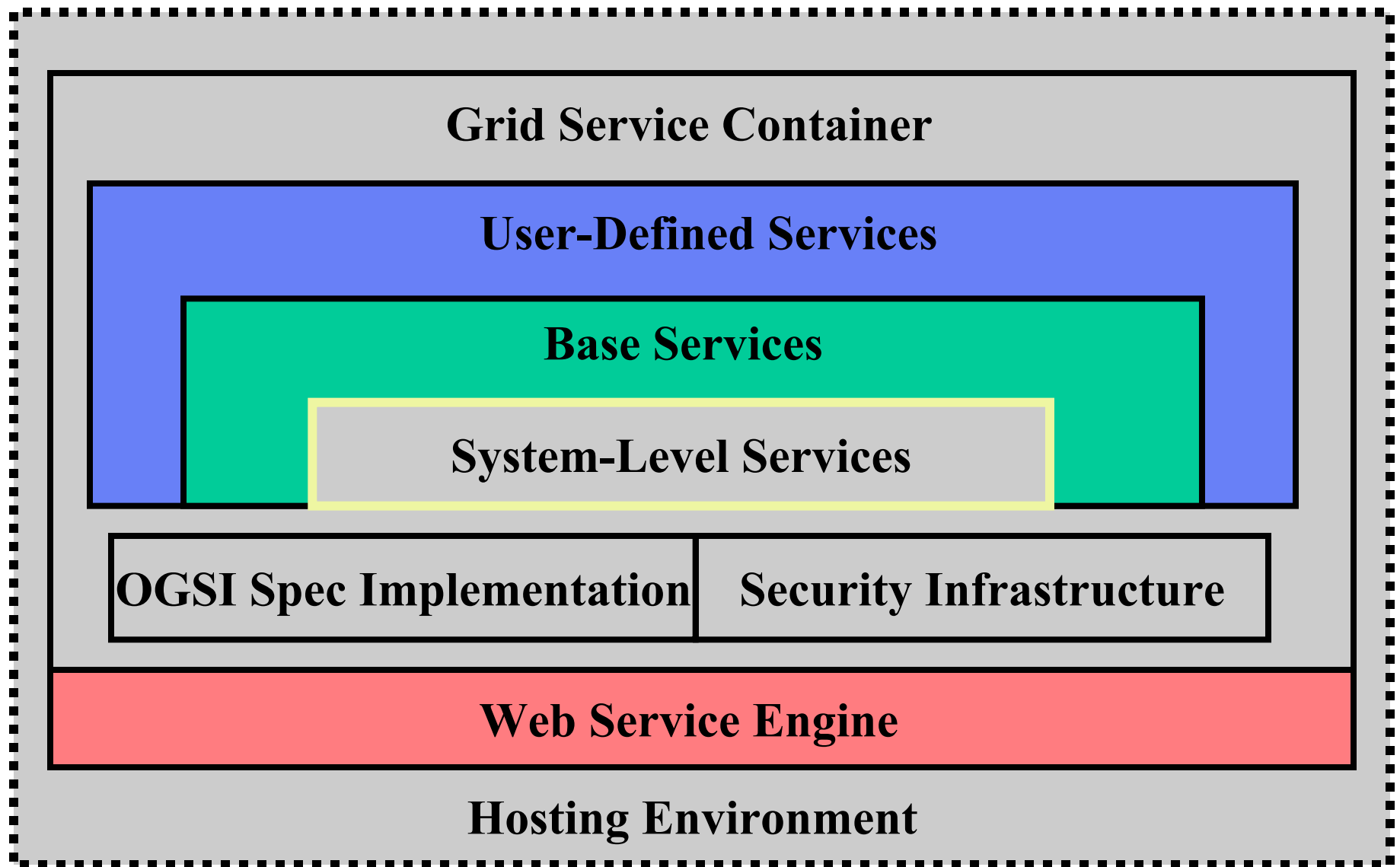
GT-OGSA Grid Service Infrastructure



GT3 Core: Security Infrastructure

- Transport Layer Security/Secure Socket Layer (TLS/SSL)
 - To be deprecated
- SOAP Layer Security
 - Based on WS-Security, XML Encryption, XML Signature
- GT3 uses X.509 identity certificates for authentication
- It also uses X.509 Proxy certificates to support delegation and single sign-on, updated to conform to latest IETF/GGF draft

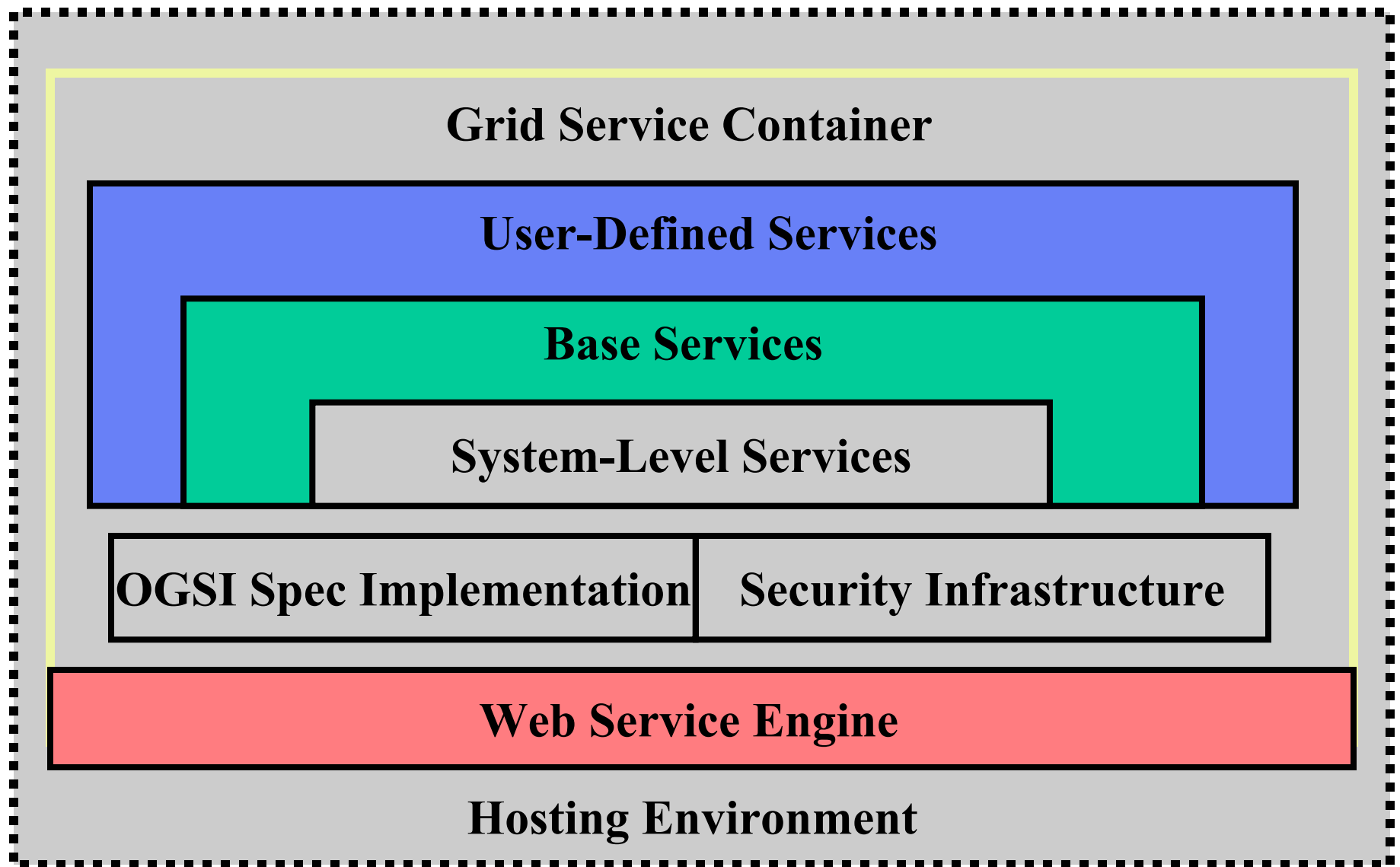
GT-OGSA Grid Service Infrastructure



GT3 Core: System Level Services

- General-purpose services that facilitate the use of Grid Services in production environments
- The 3.0 distribution includes the following System-Level services:
 - An Administration Service
 - A Logging Service
 - A Management Service

GT-OGSA Grid Service Infrastructure



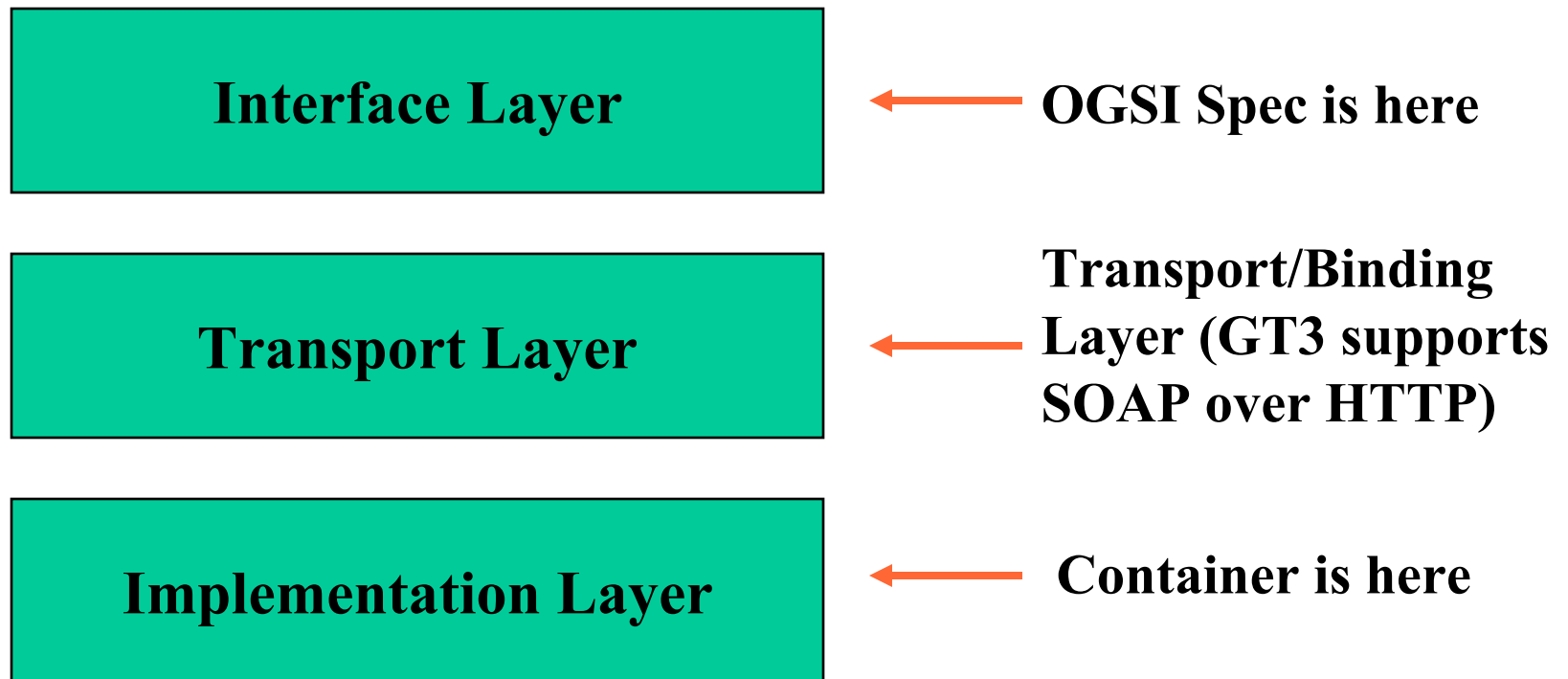
GT3 Core: Grid Service Container

Includes the OGSI Implementation, security infrastructure and system-level services, plus:

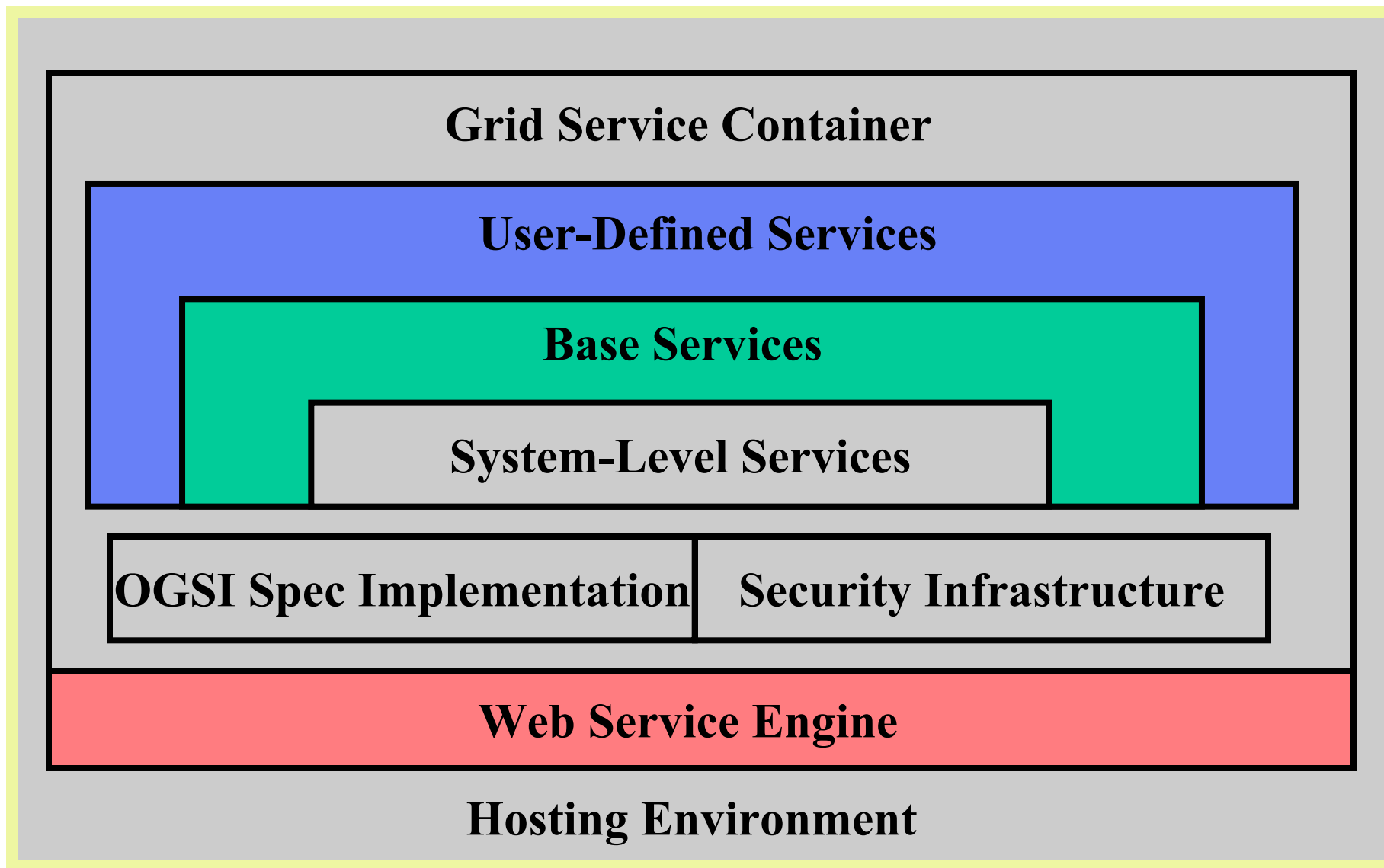
- Service activation, deactivation, construction, destruction, etc.
- Service data element placeholders that allow you to dynamically fetch service data values at query time
- Evaluator framework (supporting ByXPath and ByName notifications and queries)
- Interceptor/callback framework (allows one to intercept certain service lifecycle events)

GT3 Core: Grid Service Container (cont.)

Layers in the Web Services Model



GT-OGSA Grid Service Infrastructure



GT3 Core: Hosting Environment

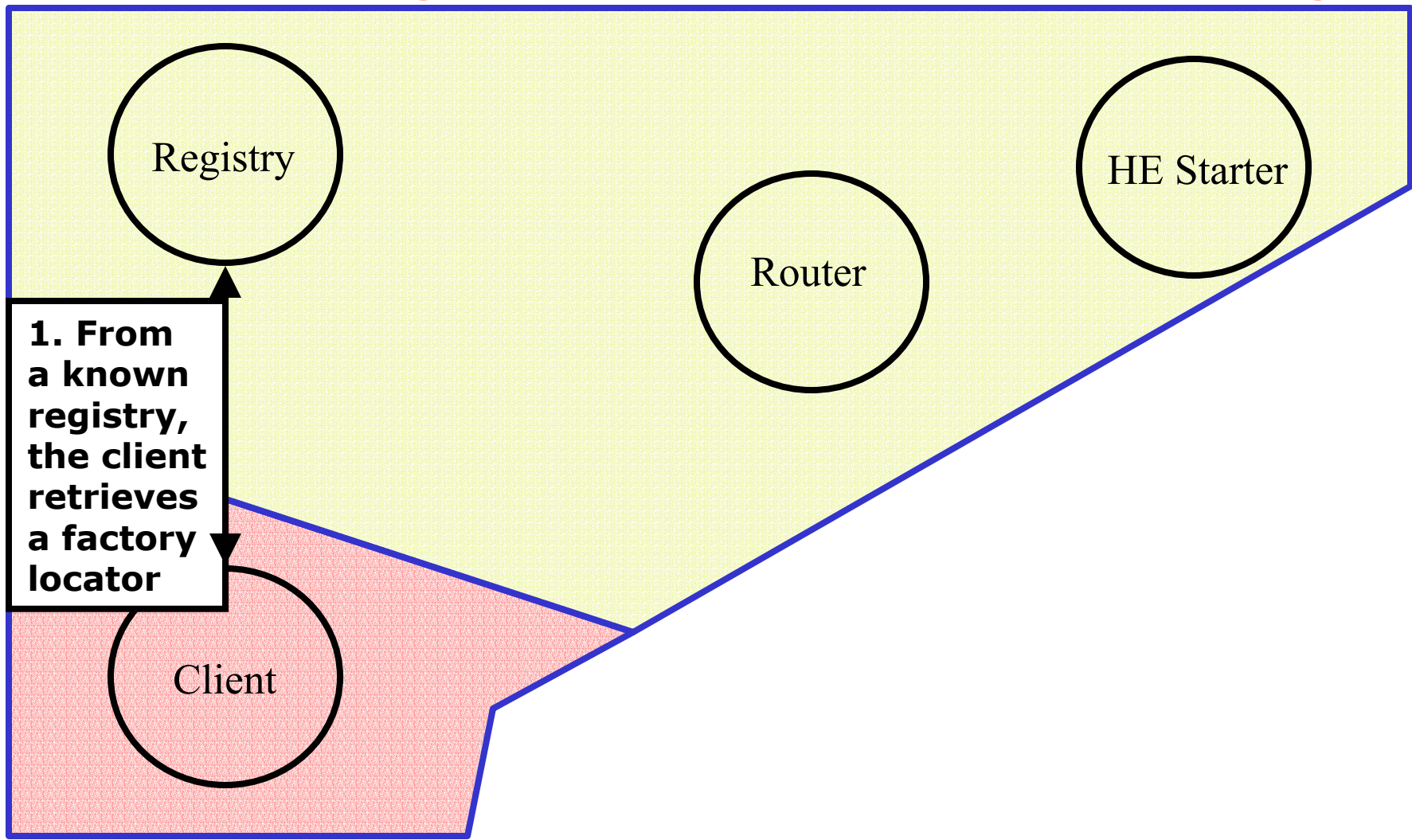
GT3 currently offers support for four Java Hosting Environments:

- Embedded
- Standalone
- Servlet
- EJB

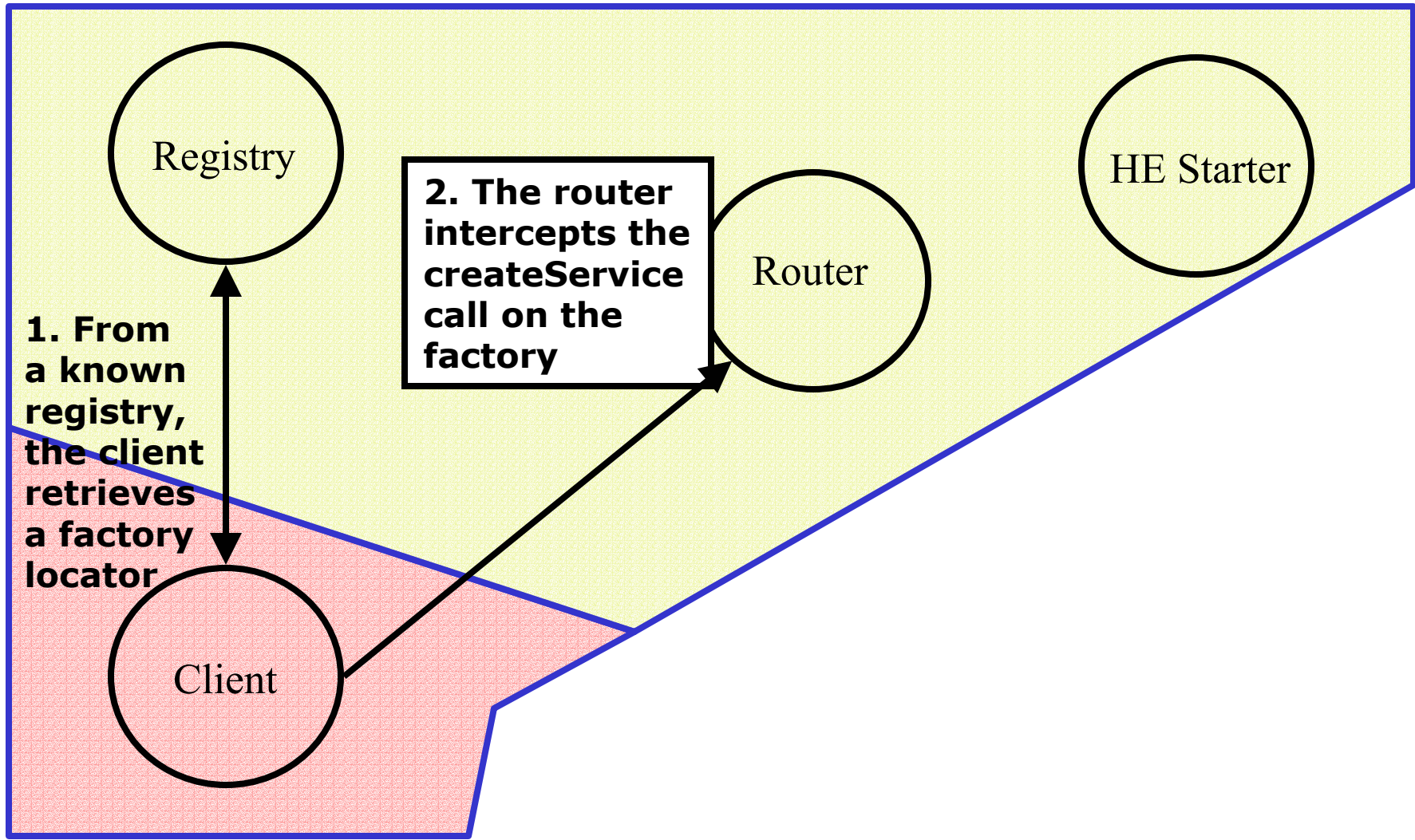
GT3 Core: Virtual Hosting Environment Framework

- Virtual Hosting allows grid services to be distributed across several remote containers
- Useful in implementing solutions for problems common to distributed computing
 - Load balancing
 - User account sandboxing

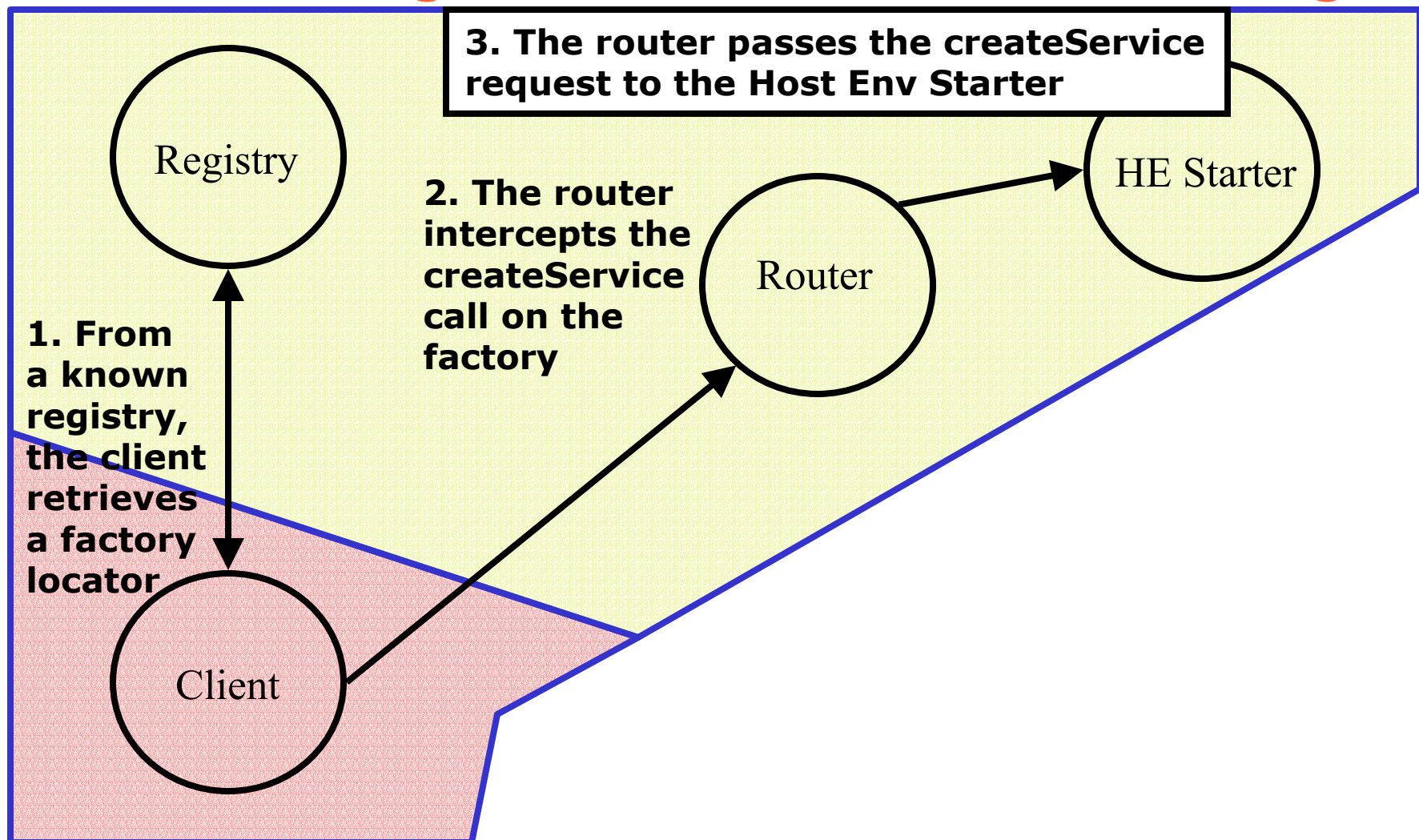
A Service Creation Scenario Illustrating Redirection in Virtual Hosting



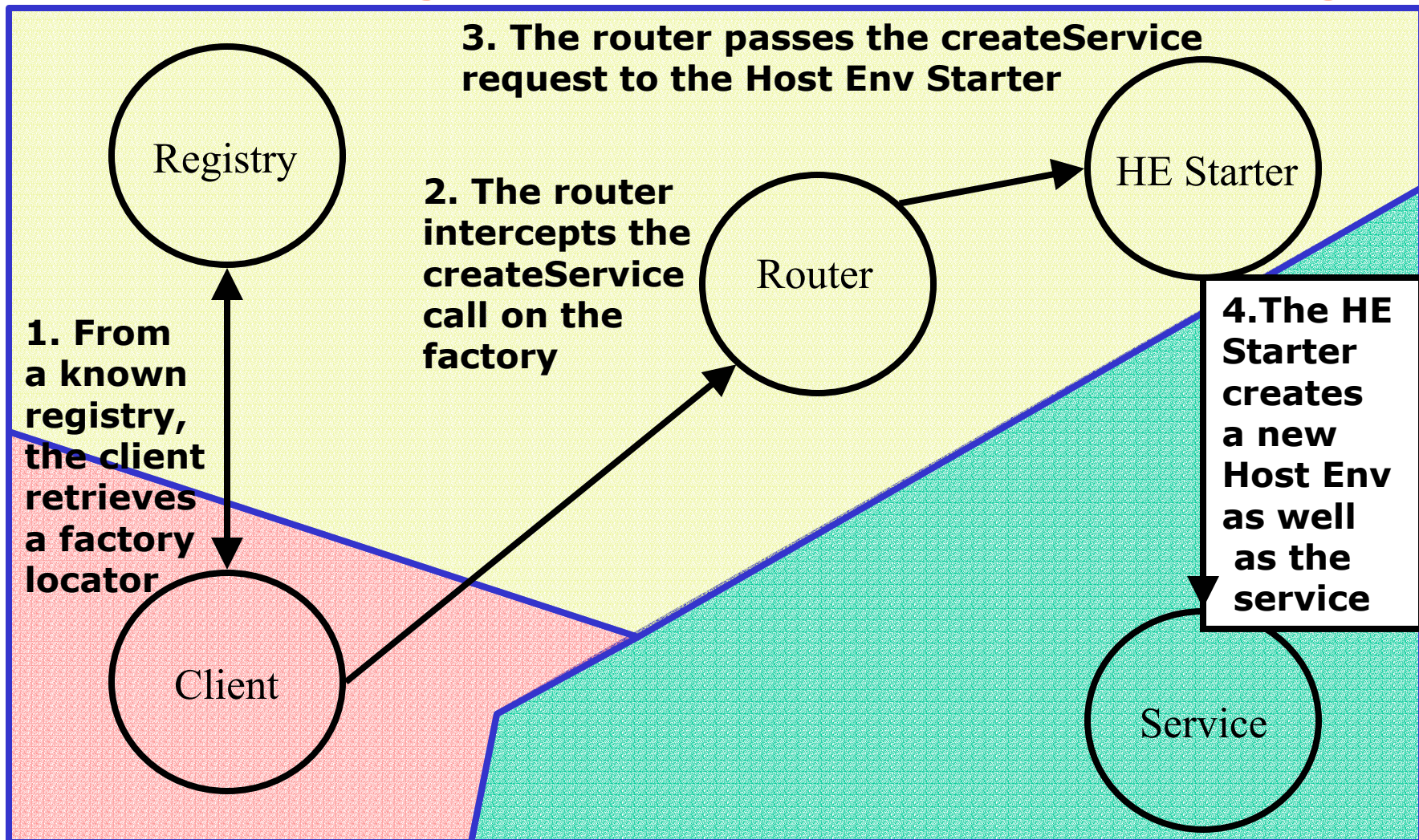
A Service Creation Scenario Illustrating Redirection in Virtual Hosting



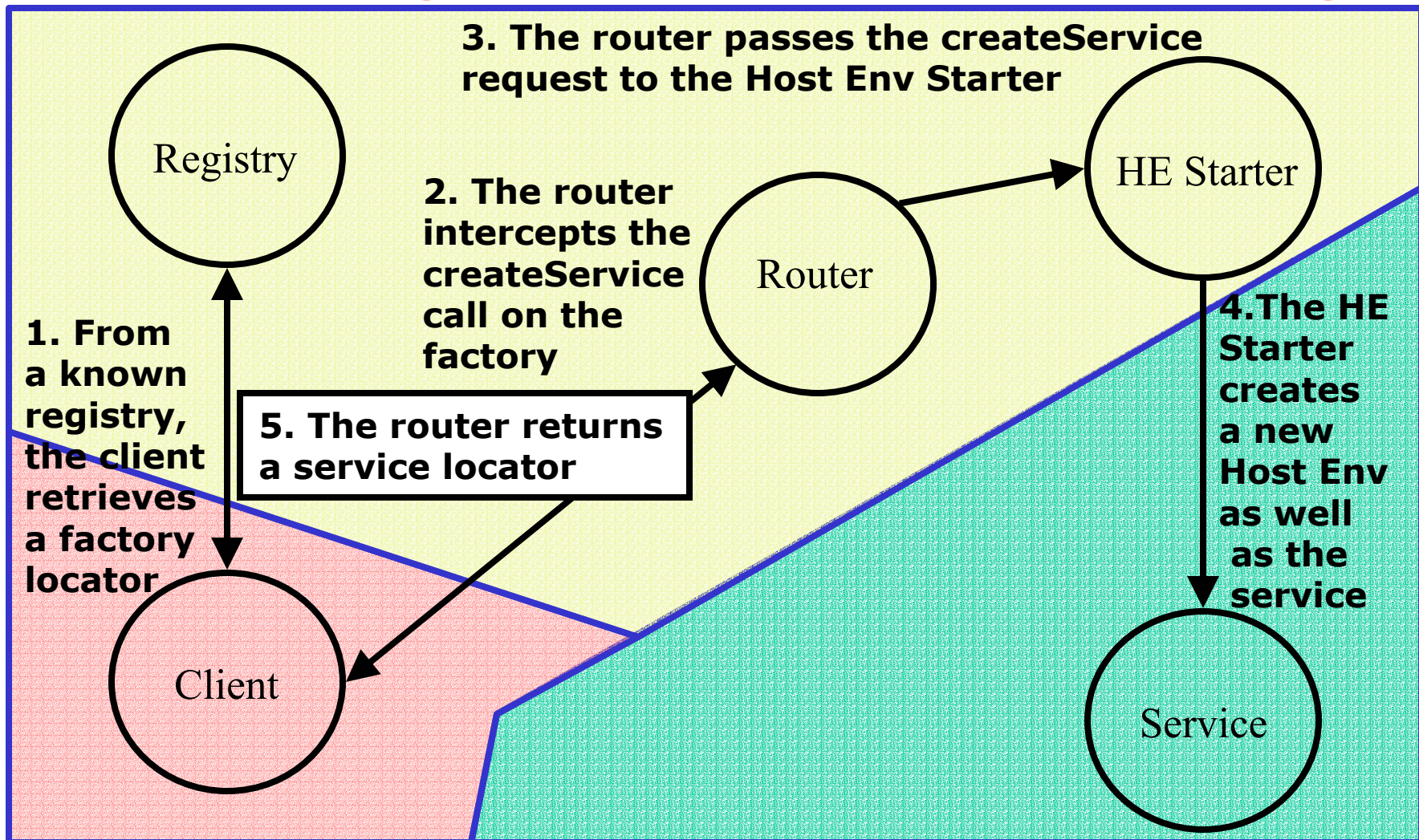
A Service Creation Scenario Illustrating Redirection in Virtual Hosting



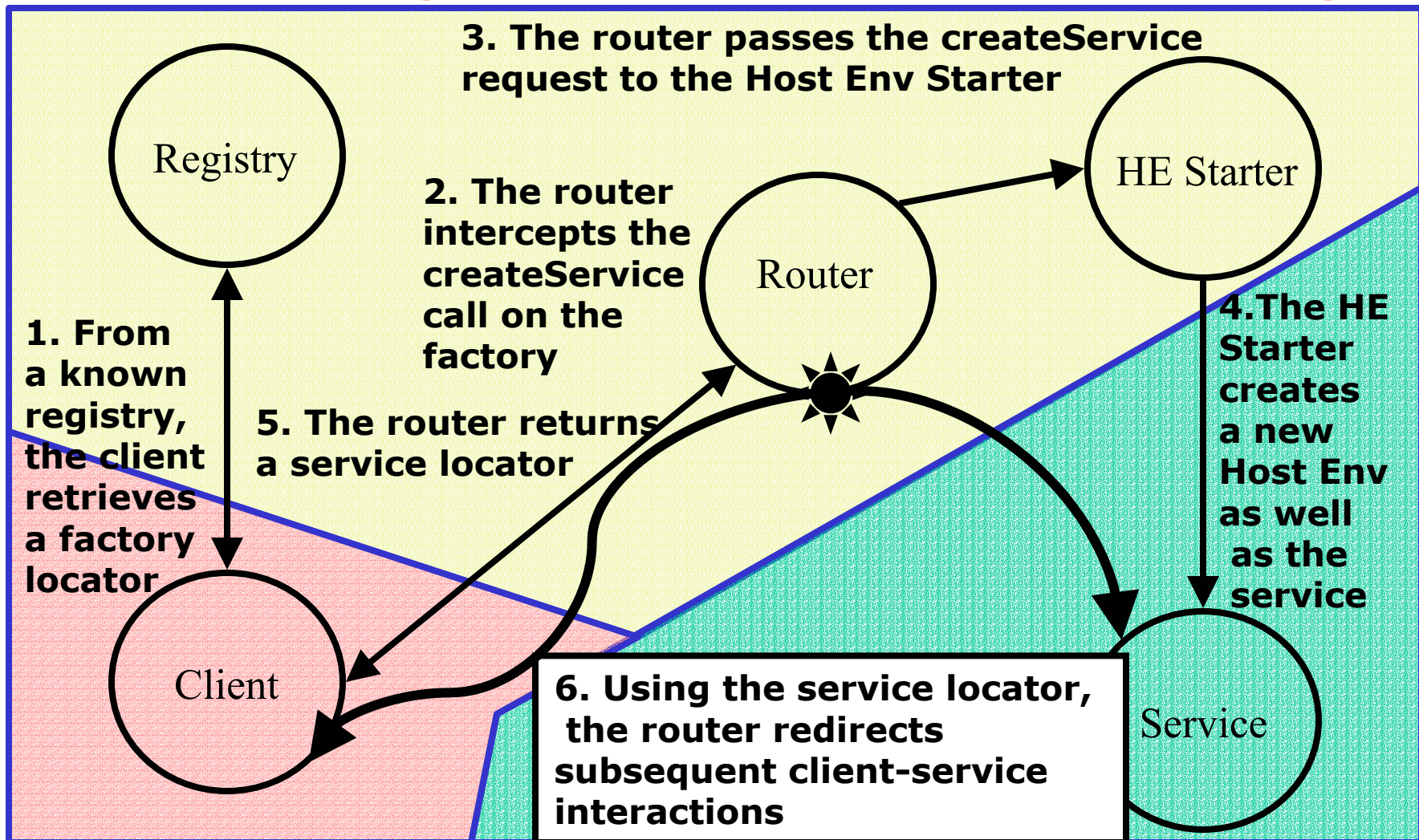
A Service Creation Scenario Illustrating Redirection in Virtual Hosting



A Service Creation Scenario Illustrating Redirection in Virtual Hosting

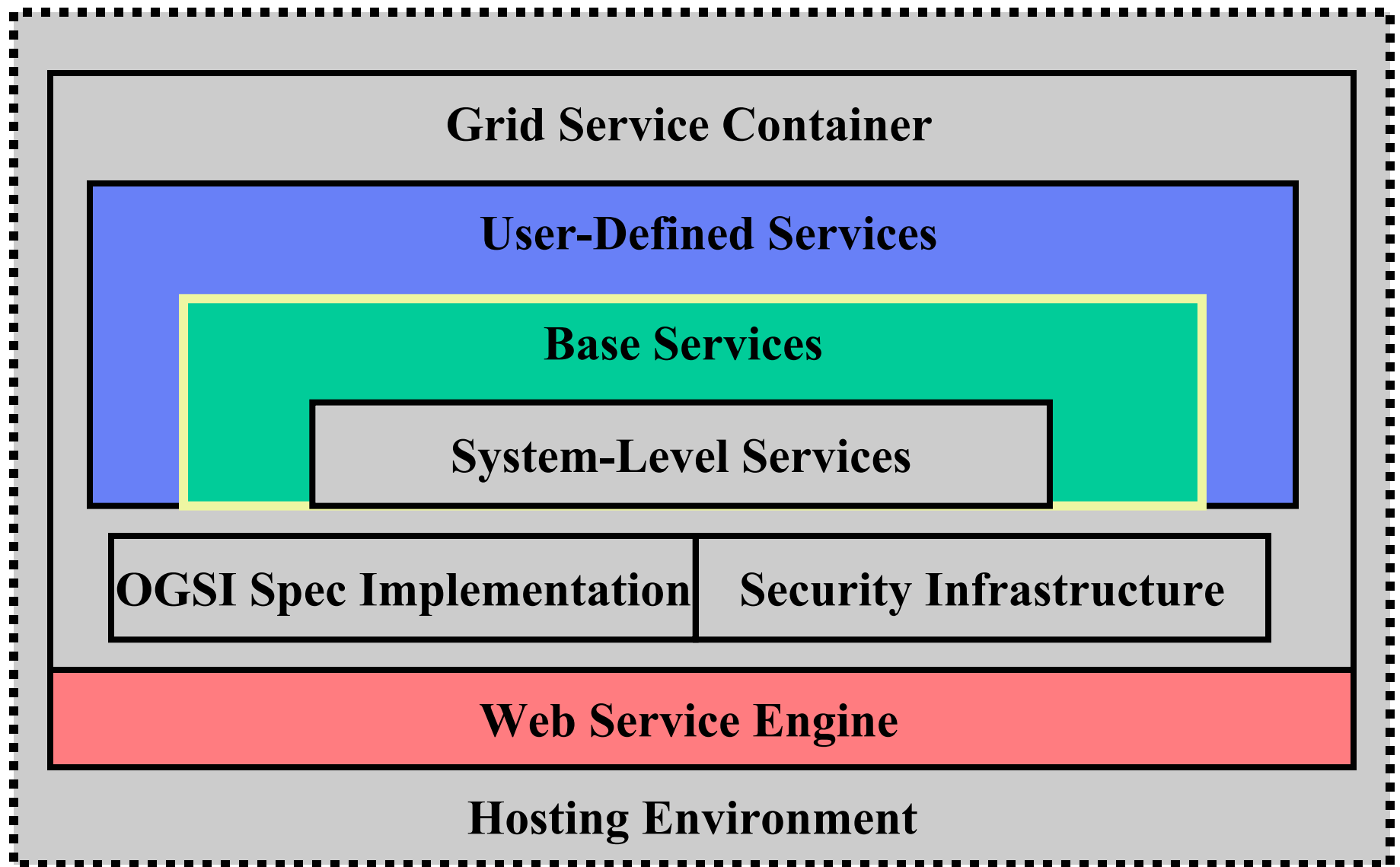


A Service Creation Scenario Illustrating Redirection in Virtual Hosting



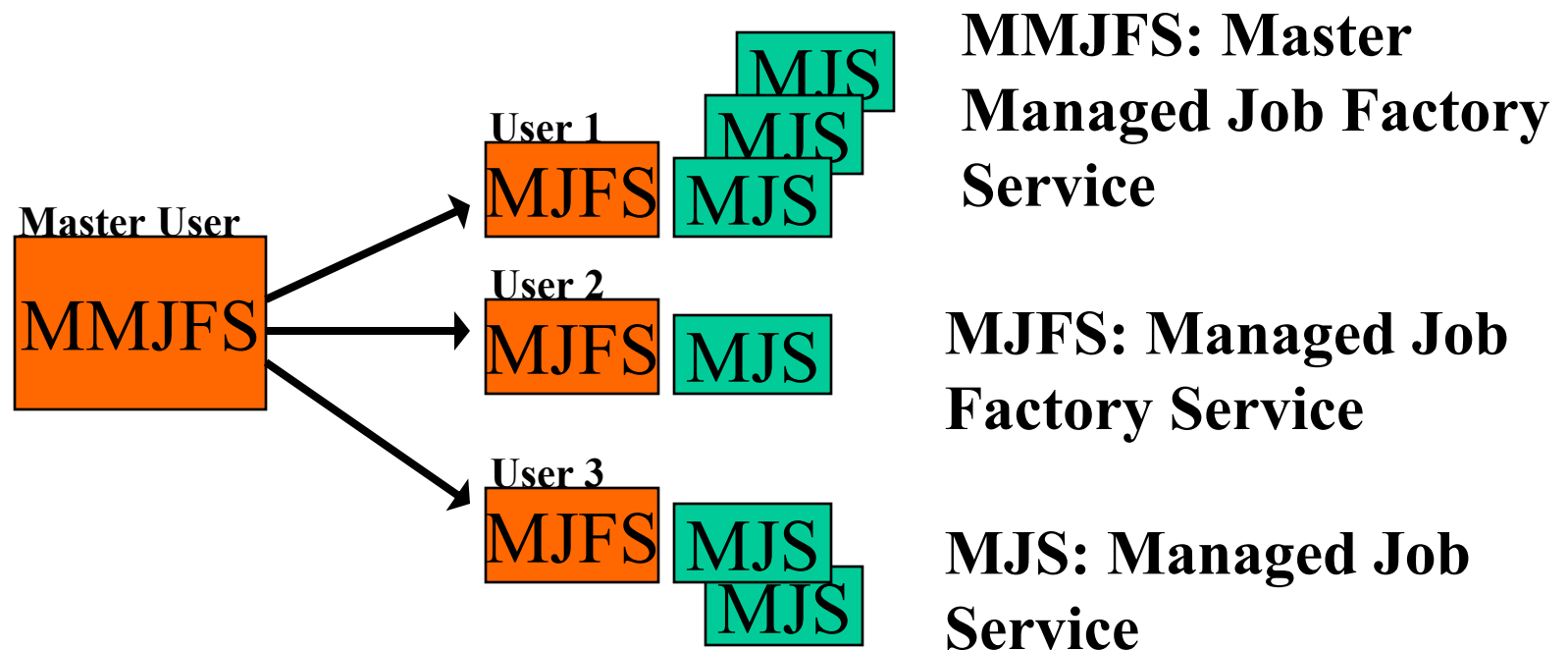
GT3 Base Services

GT-OGSA Grid Service Infrastructure

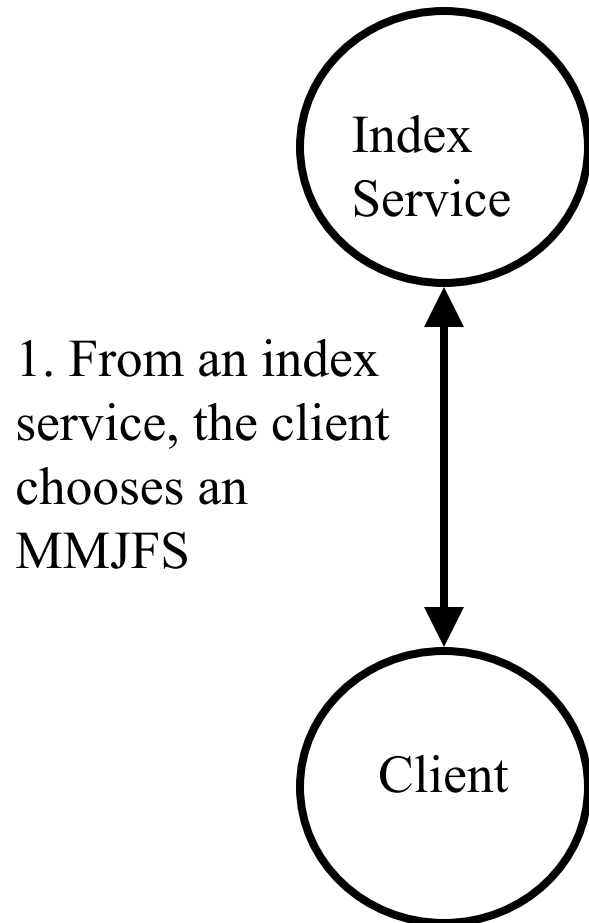


GT3 Base: Resource Management

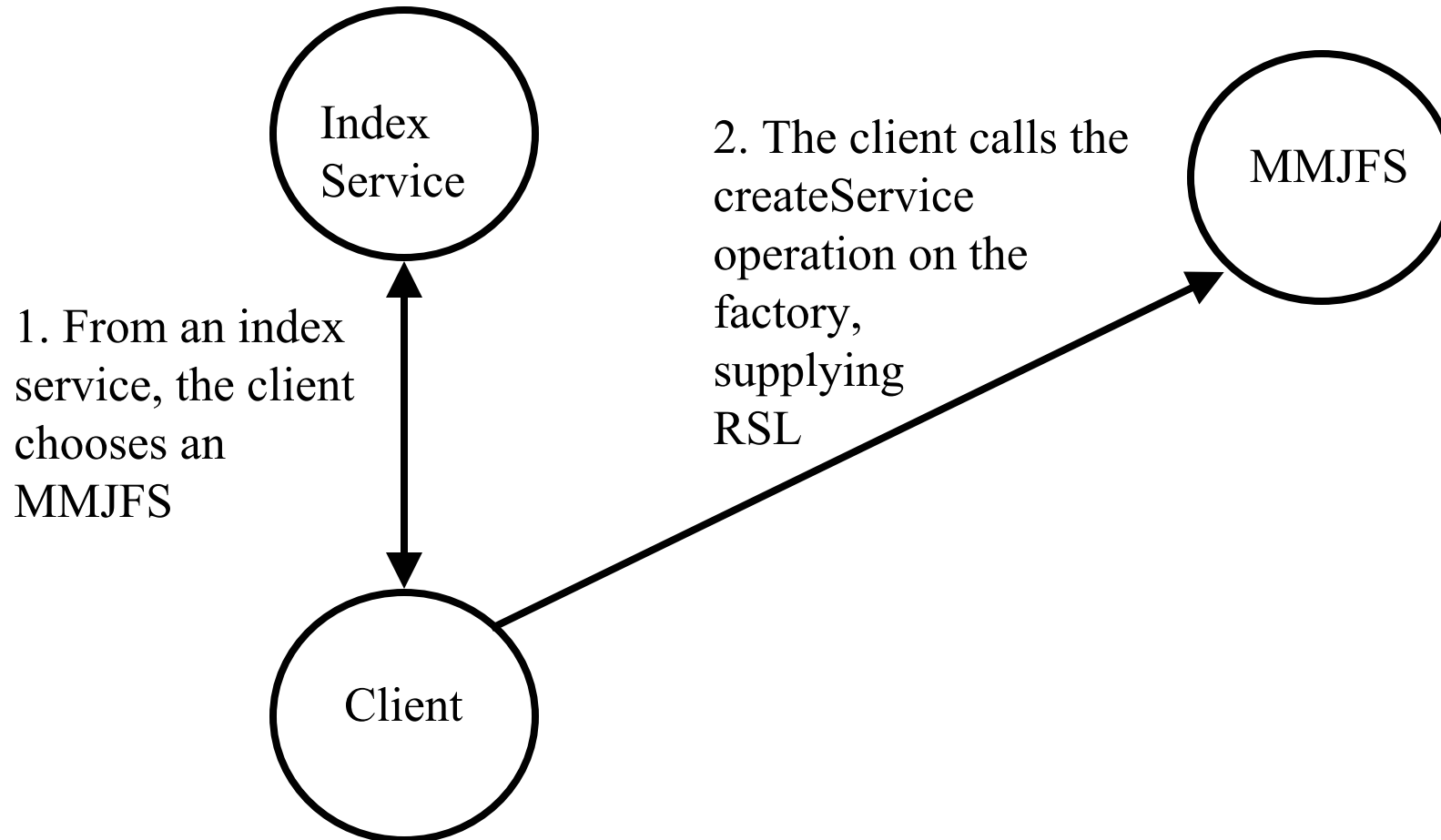
- GRAM Architecture rendered in OGSA
- The MMJFS runs as an unprivileged user, with a small highly-constrained setuid executable behind it.



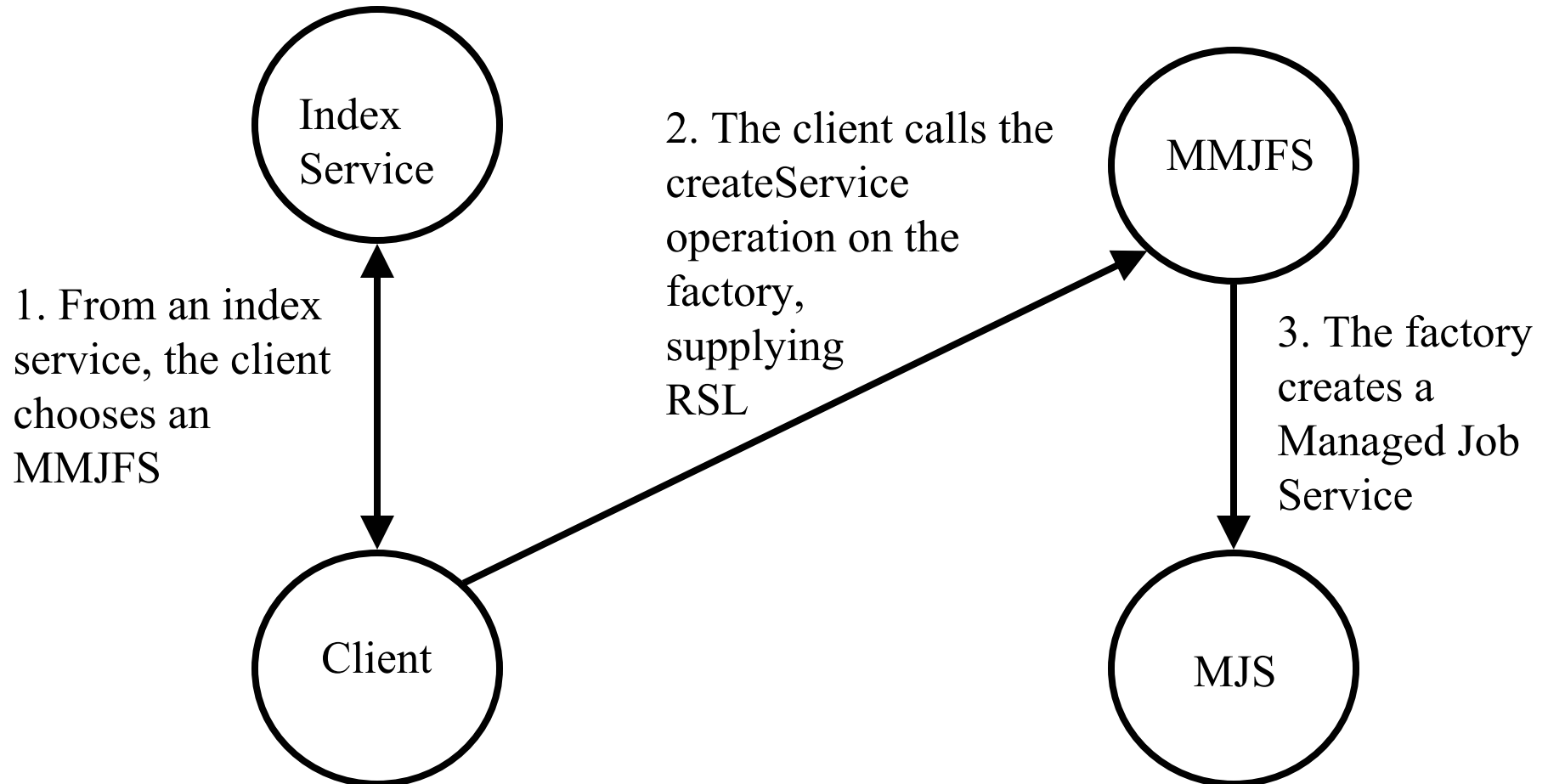
GRAM Job Submission Scenario



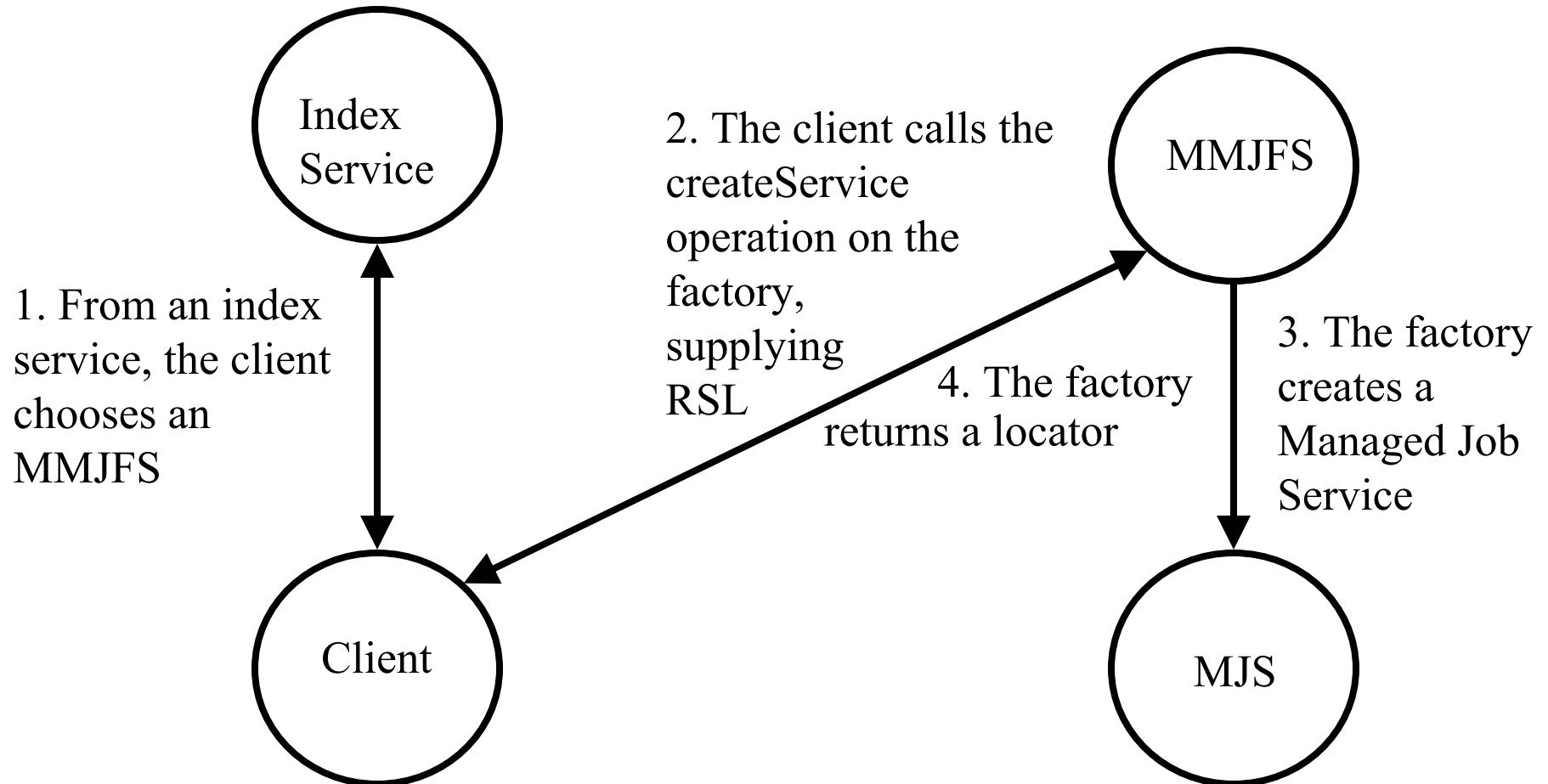
GRAM Job Submission Scenario



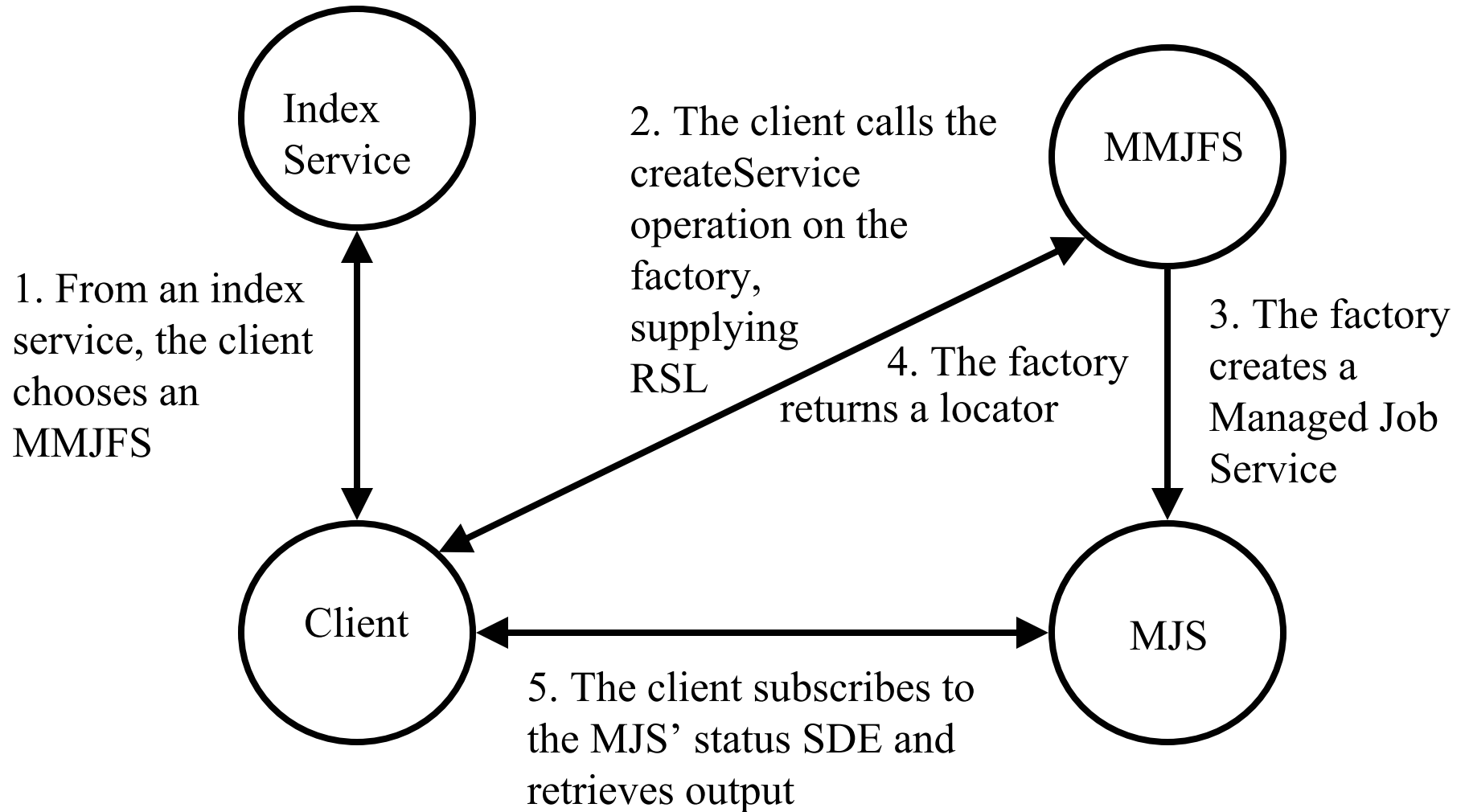
GRAM Job Submission Scenario



GRAM Job Submission Scenario



GRAM Job Submission Scenario

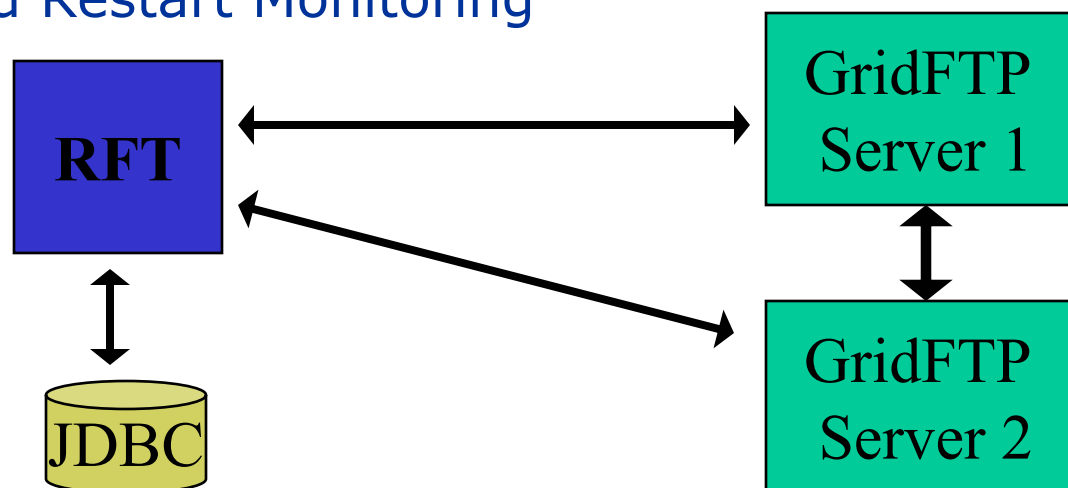


GT3 Base: Information Services

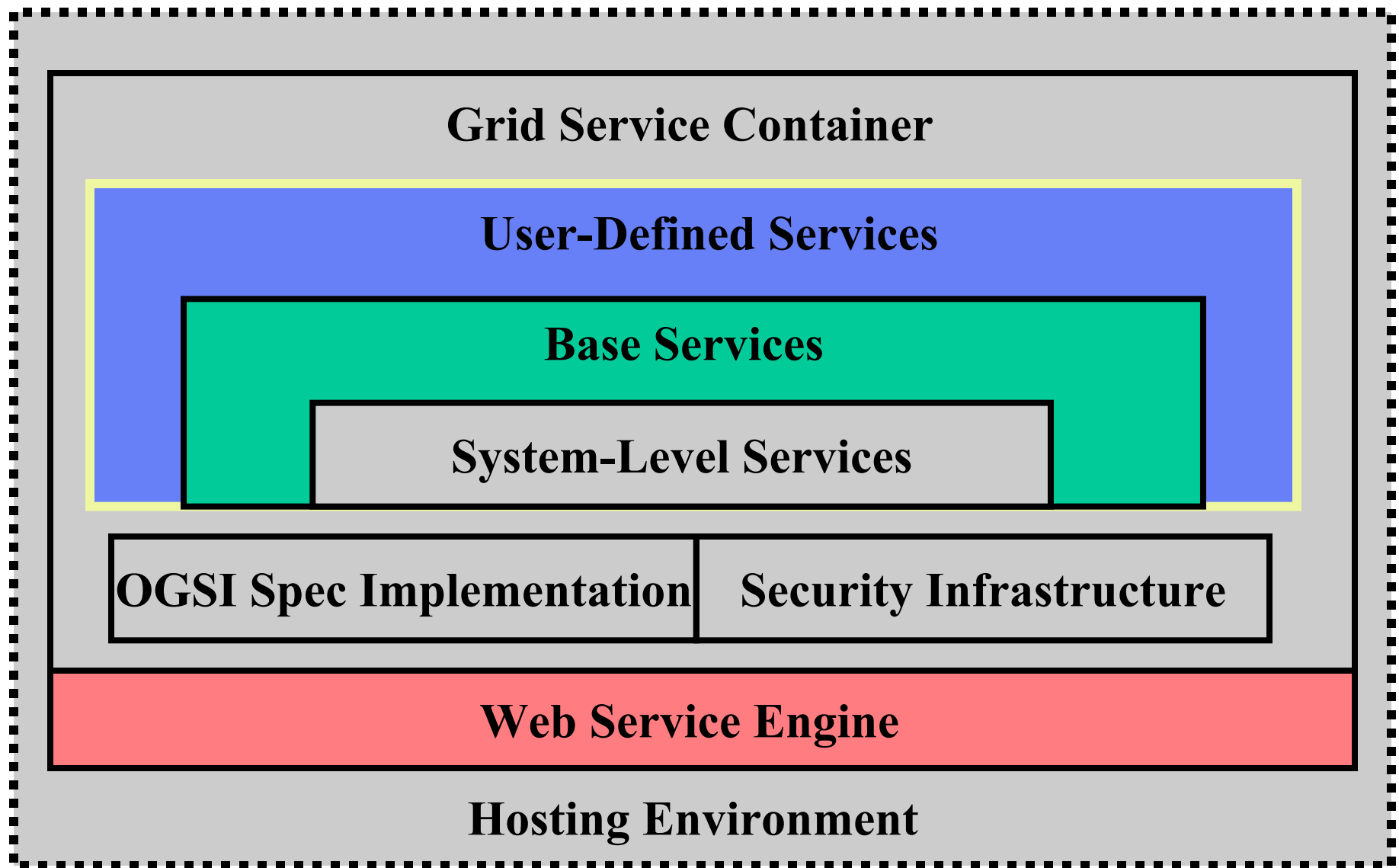
- Index Service as Caching Aggregator
 - Caches service data from other grid services
- Index Service as Provider Framework
 - Serves as a host for service data providers that live outside of a grid service to publish data

GT3 Base: Reliable File Transfer

- Reliably performs a third party transfer between two GridFTP servers
- OGSI-compliant service exposing GridFTP control channel functionality
- Recoverable Grid Service
 - Automatically restarts interrupted transfers from the last checkpoint
- Progress and Restart Monitoring



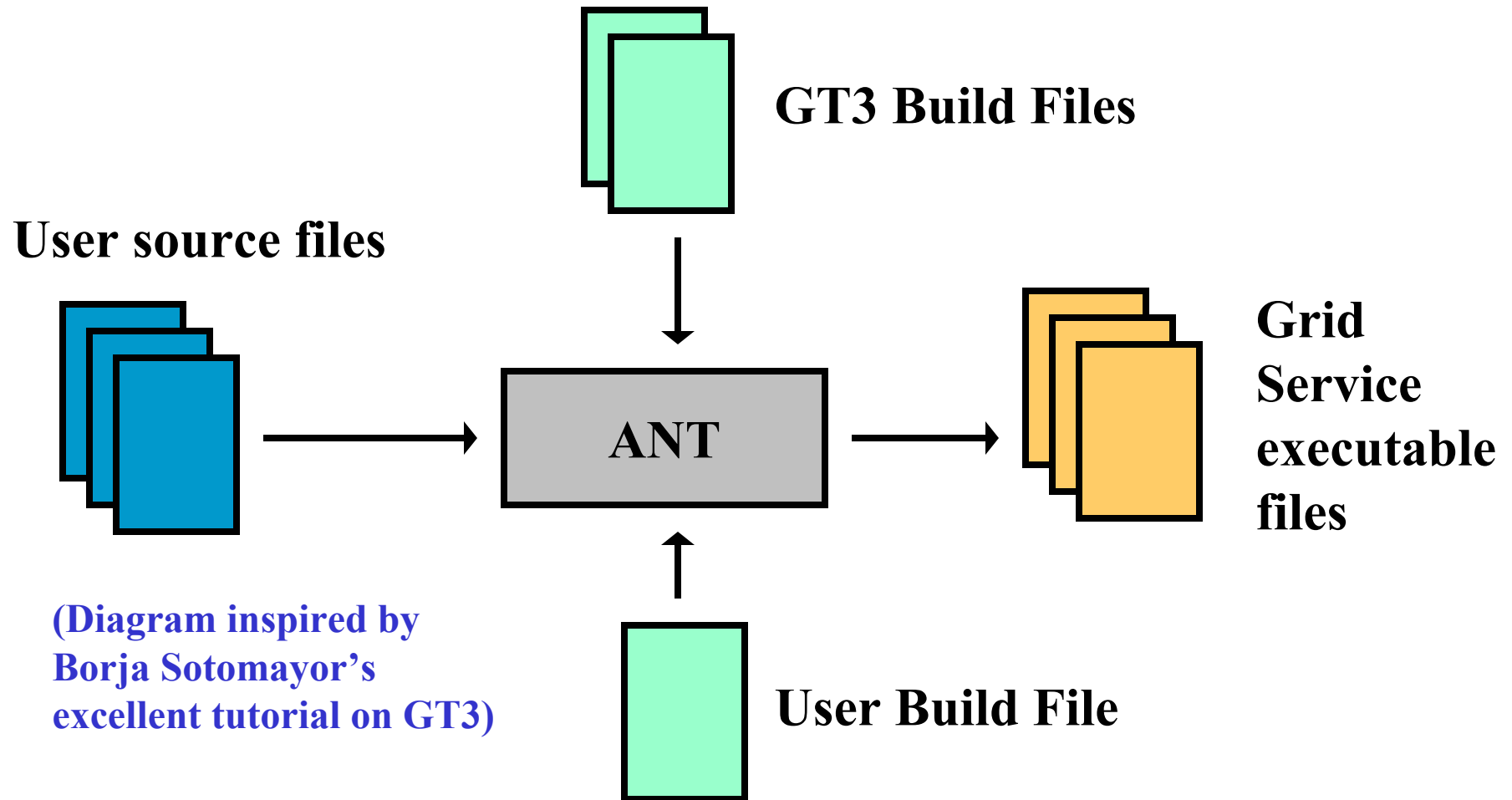
GT-OGSA Grid Service Infrastructure



GT3 User-Defined Services

- GT3 can be viewed as a Grid Service Development Kit that includes:
 - Primitives designed to ease the task of building OGSI-Compliant Services
 - Primitives for provisioning security
 - Base services that provide an infrastructure with which to build higher-level services

GT3 User-Defined Services (cont.)



Future Directions of GT

- Standardization of container model
- Development of lightweight container/api
- Adding rich support for queries
- Further refinements of Base Service designs
- Pushing on standardizing at a higher level than OGSI

Introduction to GT3

- Background
 - The Grid Problem
 - The Globus Approach
 - OGSA & OGSF
 - Globus Toolkit
- GT3 Architecture and Functionality: The Latest Refinement of the Globus Toolkit
 - Core
 - Base Services
 - User-Defined Services
 - Future Directions
- **Installation and Administration**
 - Installation
 - Configuration
 - Debugging
 - Support
- Important Things to Remember

Overview

- Installing GT3
- Overview of installed services
- Running clients and services
- Configuring GT3
- Debugging
- Support

Overview of Installing GT3

- Prerequisites
 - JDK, ant
- Optional tools
 - Other hosting environments
- Installation
 - GPT installer or Ant-only
- Required post-installation setup
 - Acquiring certificates
 - Setting permissions

Installation Pre-requisites

- **JDK 1.3.1+**
 - Xindice + Sun JDK1.3.1 + Linux has errors for some versions of Linux
 - Pre-1.4.1 JDKs require JAAS as a separate download
- **Ant 1.5+**
 - Required for source builds, recommended for binary
- **YACC**
 - For cbindings and findServiceData from source
- **JDBC compliant database**
 - Only required for RFT, RLS

Optional Tools

- Alternate hosting environments
 - Jakarta Tomcat
 - JBOSS
 - Websphere
 - and more ...
- Microsoft .NET Framework
- Junit for testing

Installing GT 3.0 (Unix)

- Make sure pre-requisites are available
 - Set JAVA_HOME
 - Add \$ANT_HOME/bin to your PATH
- Download the GPT source bundle, or the appropriate binary bundle
- `./install-gt3 /path/to/install`
- `./install-gt3-mmjfs /path/to/install`
 - After you have certificates

Installing GT 3.0 (Windows)

- Make sure pre-requisites are available
 - Likely to use Cygwin to get the tools you need
- Unset CLASSPATH to avoid conflicting jars
- Install GT3 core by running “ant dist” and “ant setup” in ogsa/impl/java
- Install higher-level services using “ant deployGar”

Installing GT 3.0 (Binaries)

- GPT Binary bundles available for different UNIX platforms
- Core and Higher Level Services binaries available for Windows

Post-installation setup

- GSI uses X.509, so need to get certificates
 - Run setup-gsi as root
 - grid-cert-request for user and host
 - Can re-use GT2 certificates if you have them already
- Run `setperms.sh` (after `install-gt3-mmjfs`)
 - This is to make globus-grim setuid to the account which owns the hostcert, and to make the UHE launcher setuid so it can create jobs on behalf of users

Overview of Installed Services

- What just installed, and how?
- Bundles on Unix and Windows:
 - GT3 core + higher-level services
- Bundles on Unix only:
 - GRAM bundle + GT2 dependencies
 - Cbindings bundle + client
 - Replica Location Service (RLS)
 - GT2 components

Other “Services” Bundled with GT3

- GridFTP
 - Used by RFT
- Replica Location Service (RLS)
 - Distributed registry service that records the locations of data copies and allows discovery of replicas
 - Designed and implemented in a collaboration between the Globus and DataGrid projects

The interfaces for these services are not yet
OGSI-Compliant

Where did they install?

- `/etc/grid-security`
 - certificates/ subdirectory of trusted CAs
 - grid-mapfile
 - grim-port-type.xml
 - hostcert.pem, hostkey.pem
 - grid-security.conf
- `$GLOBUS_LOCATION`
 - Everything else

Location of GARs

- Before the GARs are deployed, a copy is stored in gars/
- Contains the client and server Webservice Deployment Descriptor (WSDD), as well as the jar files
- To change the main server-config.wsdd, can edit the service's .wsdd file and re-deploy

GPT Wrappers

- The GARs apply to both Windows and Unix
- GPT wraps the GAR with metadata, including dependency information and version number
- Allows for easier upgrades, and for other software to indicate dependencies
- <http://www.gridpackagingtools.com/>

GT3 Services

- Core
 - OGSI hosting environment
- MMJFS
 - The single point for submitting jobs
- MJS
 - Instances created per submitted job
- GRIM
 - Security tool for creating hostcert proxies

GT3 services (cont.)

- Index
 - A point to query for information
- Aggregator
 - SDE aggregation tool. Used by index
- mds_db
 - Used by index to track data
- Providers
 - Used to obtain host information

GT3 services (cont.)

- RIPS
 - Queue information for jobs
- Filestreaming
 - Used to move stdin/stdout for jobs
- RFT
 - Reliable File Transfer
- JMS
 - JMS notification source for J2SE/J2EE
- Servicegroup
 - OGSI service groups

Dependencies

- Some backend tools see re-use from previous releases for use in resource management
- For instance, jobmanager scripts for interfacing to local scheduling systems are the same
- Besides GT2, Java CoG supplies integrated security

Overview of Running Clients and Services

- Set your environment
- Create a proxy (single sign-on)
- Available clients
 - GRAM client
 - Index clients
 - RFT client

Environment Setup

- Set your environment:
 - export GLOBUS_LOCATION
 - source etc/globus-user-env.sh
- grid-proxy-init
- This environment setup is assumed for all later slides

Starting the container

- Services run in the container
- `bin/globus-start-container -p <port>`
- The container will print a list of Grid Service Handles (GSH) that can be used by clients
 - <http://127.0.0.1:8080/ogsa/services/base/gram/MasterForkManagedJobFactoryService> for instance
- User's Guide has more details

Running the GRAM Client

- To submit a job:
 - `bin/managed-job-globusrun -factory host{:port/service} -file etc/test.xml`
- Prerequisites:
 - Authorized to use the service by `grid-mapfile` and `grim-port-type.xml`
 - Have a proxy
 - Setuid GRIM and User Hosting Environment (UHE) launcher

Running the GRAM Client (Cont.)

- etc/test.xml contains the new format for the Resource Specification Language (RSL)
- By default, outputs to /tmp/stdout
/tmp/stderr
 - Probably good to customize it for yourself to avoid permissions errors
- See Resource Management links under <http://www-unix.globus.org/developer>

Reading From the Index Service

- bin/globus-service-browser
- bin/ogsi-find-service-data
 - requires C bindings
- Prerequisites:
 - Have to add
ServiceDataProviderExecutionPortType and
ServiceDataAggregatorPortType to client-
gui-config.xml
- See Information Services for more details

Using RFT

- First, start a GridFTP server
- Setup a postgres database for RFT to use
- Enter DB values into server-config.wsdd
- `java org.globus.ogsa.gui.RFTClient <RFT factory> <path to transfers>`
- Store transfers in a file, one URL per line
- See Data Management for more details

Using RLS

- globus-rls-server
 - New version uses PostgreSQL and psqlODBC
- bin/globus-rls-admin -p rls://serverhost
 - ping test of server
- <http://www.globus.org/rls/>

Configuring GT3

- Add backend schedulers to MMJFS
 - PBS, LSF, Condor, ...
 - These will be GPT setup packages. Run `gpt-install` and `gpt-postinstall`
- Configure a hierarchy of index services
- Adding new services
 - `ant deployGar -Dgar.name=/path/to/gar`
- Check GTR for new services, and consider publishing your own (gtr.globus.org)

Debugging

- Always go to the most basic levels first!
- If “connection refused” try telnet
- If “DB connection refused” try your native DB client first
- If trouble with your proxy, try
 - grid-proxy-init –verify –debug
- If trouble with “policy” or GRIM, try
 - bin/globus-grim –out /tmp/grim_test

Debugging (Cont.)

- Logfiles
 - Make sure to redirect container logs to a file
 - `~user/.globus/uhe-<host>/log` contains the logs for the UHE running on `<host>`
 - GridFTP servers use syslog for keeping logs
- Increase debugging level in `ogsilogging.properties` file

Support

- See
 - <http://www.globus.org/toolkit/support.html>
- It gives an overview of documentation, mailing lists, and bugzilla

Introduction to GT3

- Background
 - The Grid Problem
 - The Globus Approach
 - OGSA & OGSF
 - Globus Toolkit
- GT3 Architecture and Functionality: The Latest Refinement of the Globus Toolkit
 - Core
 - Base Services
 - User-Defined Services
 - Future Directions
- Using GT3
 - Installation
 - Configuration
 - Debugging
 - Support
- **Important Things to Remember**